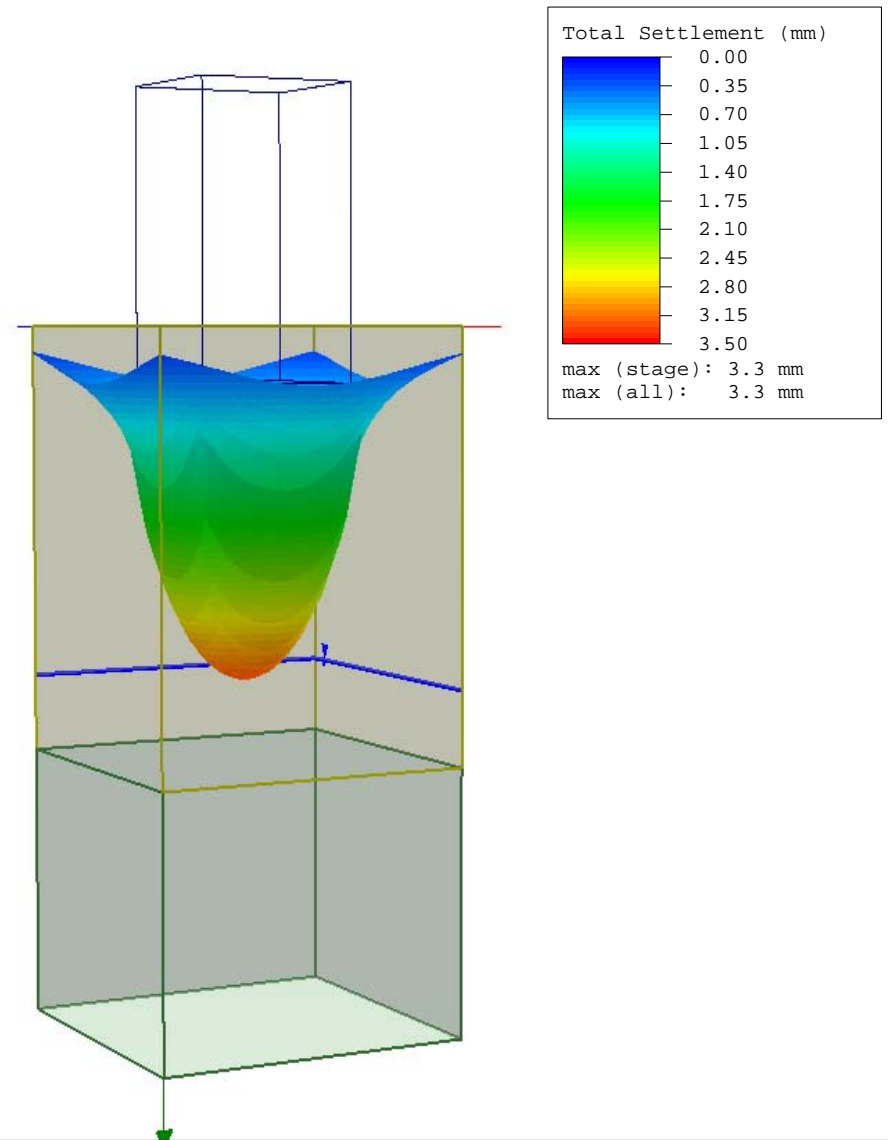
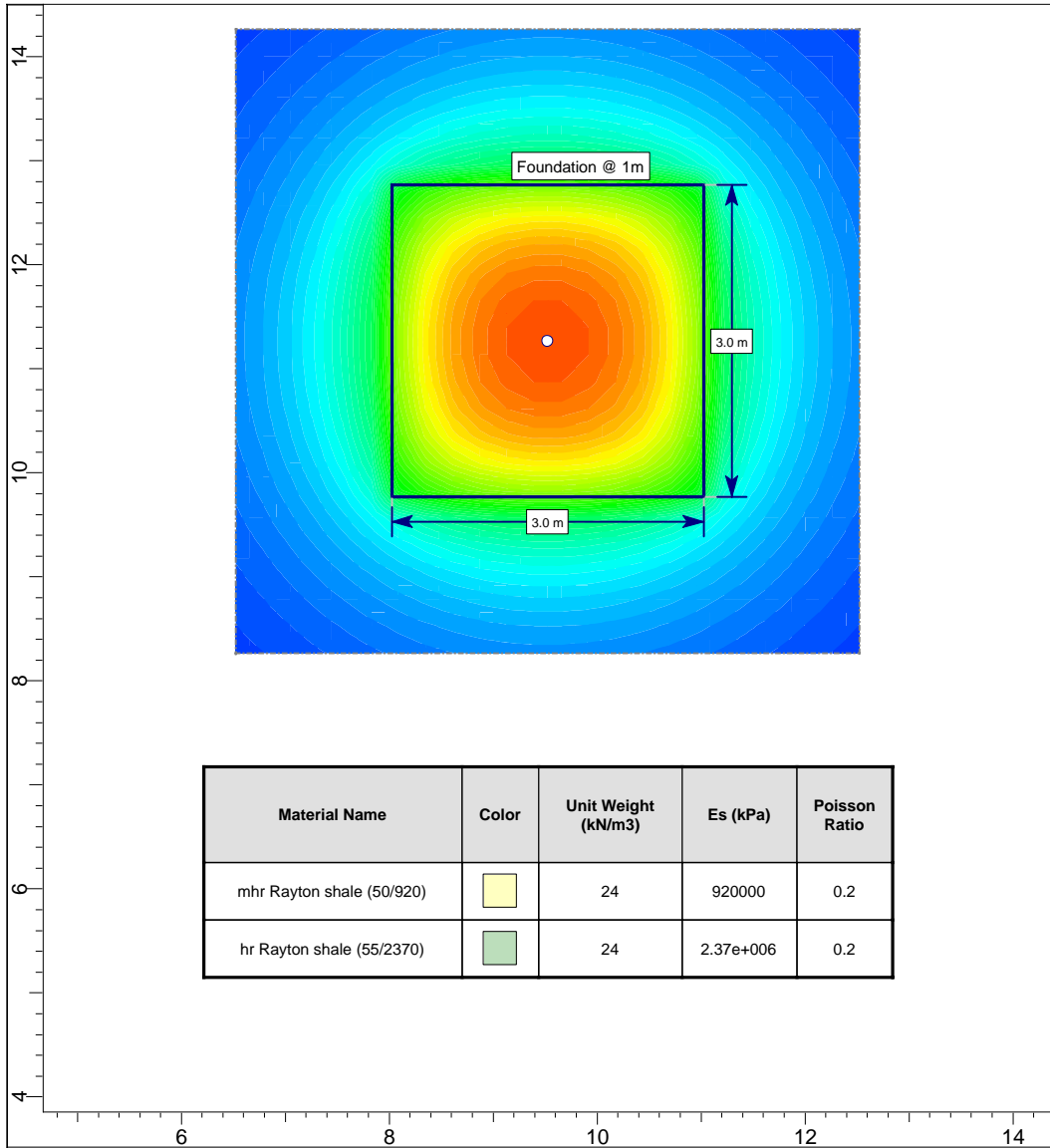

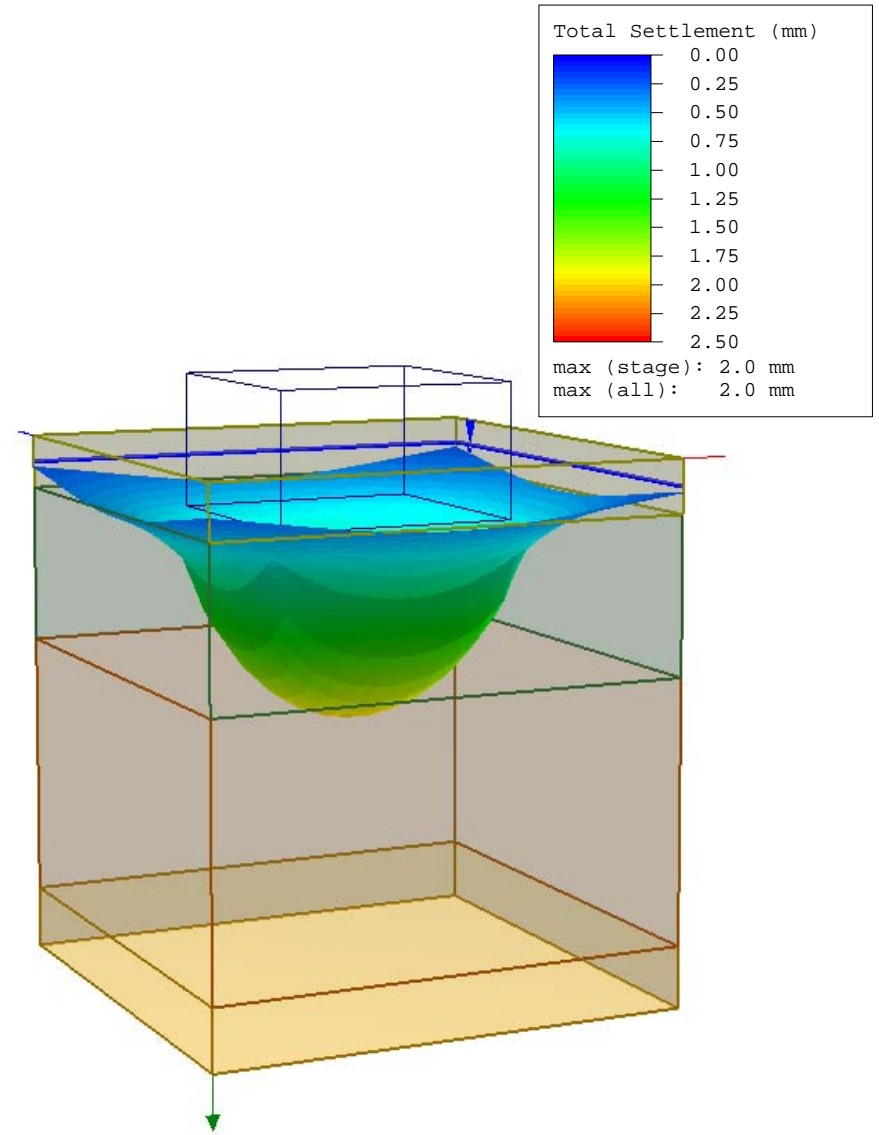
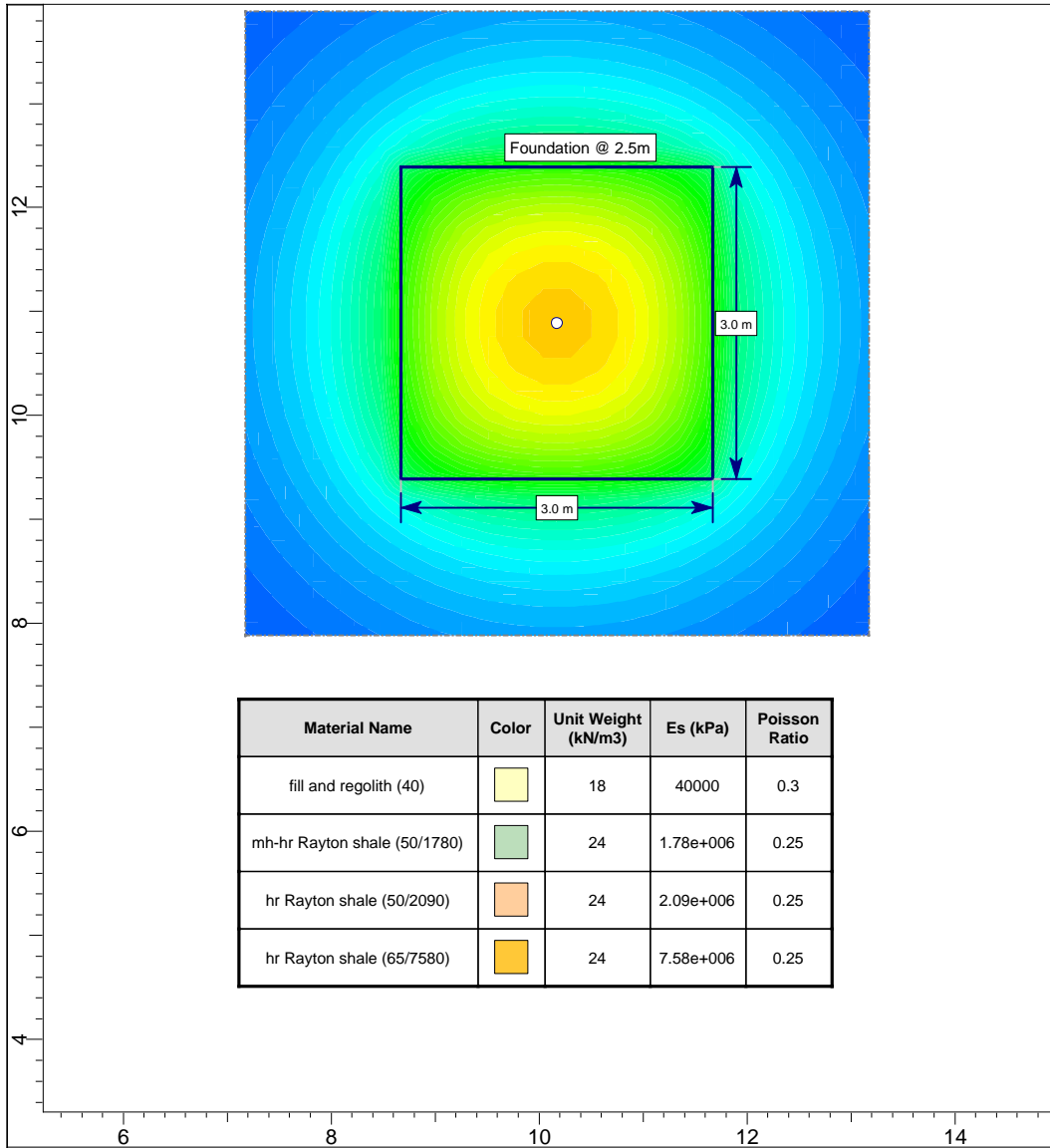
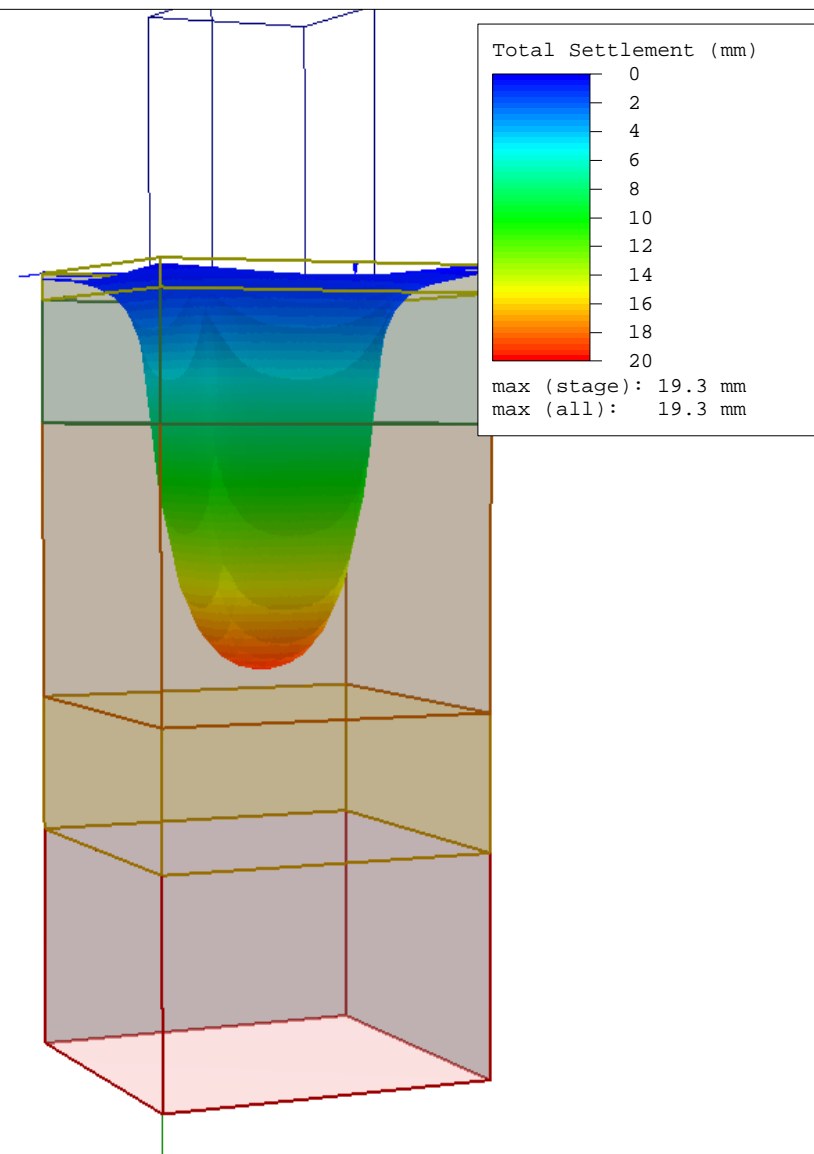
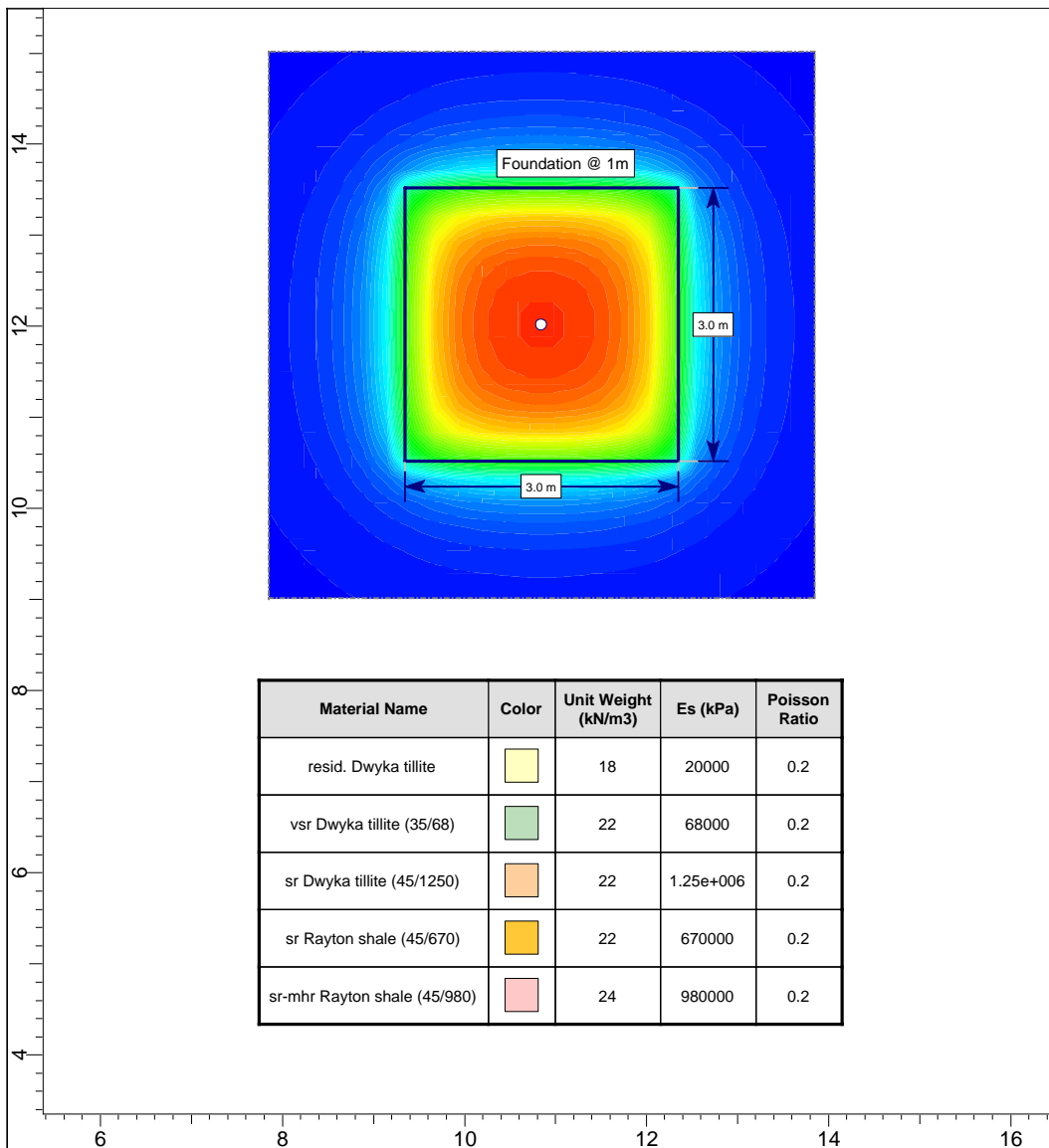


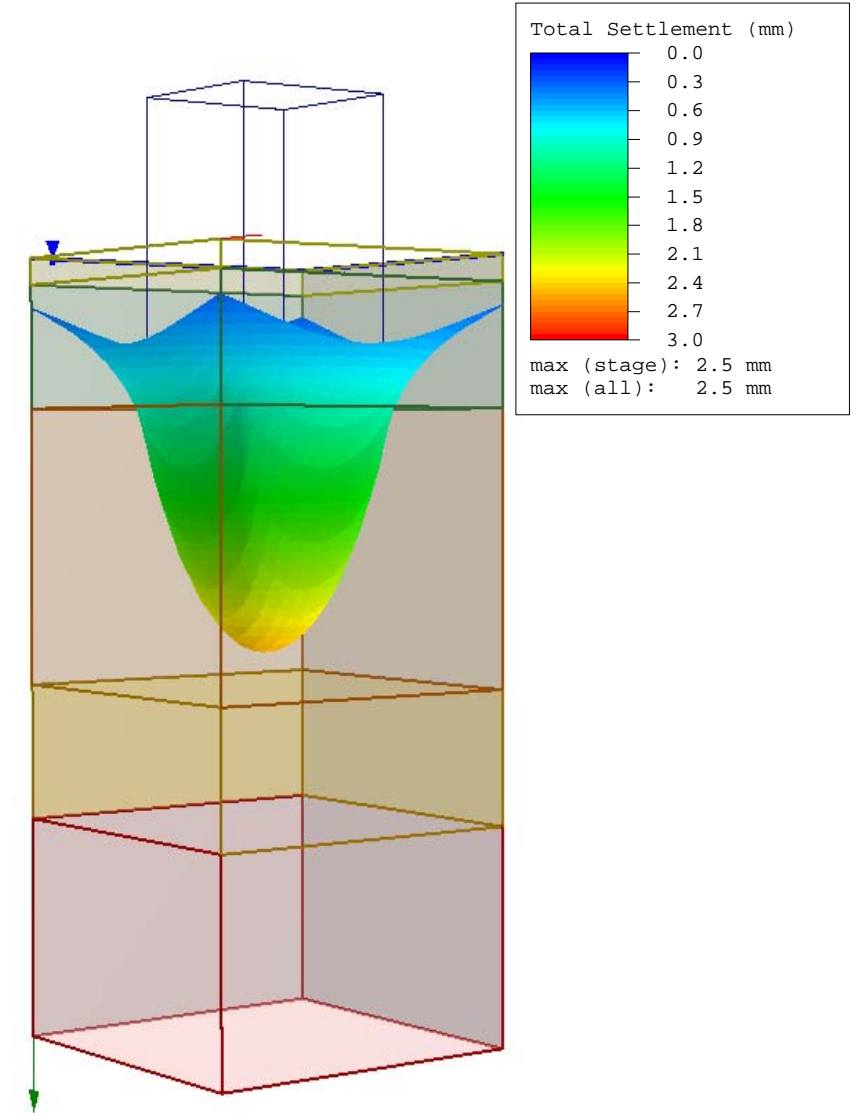
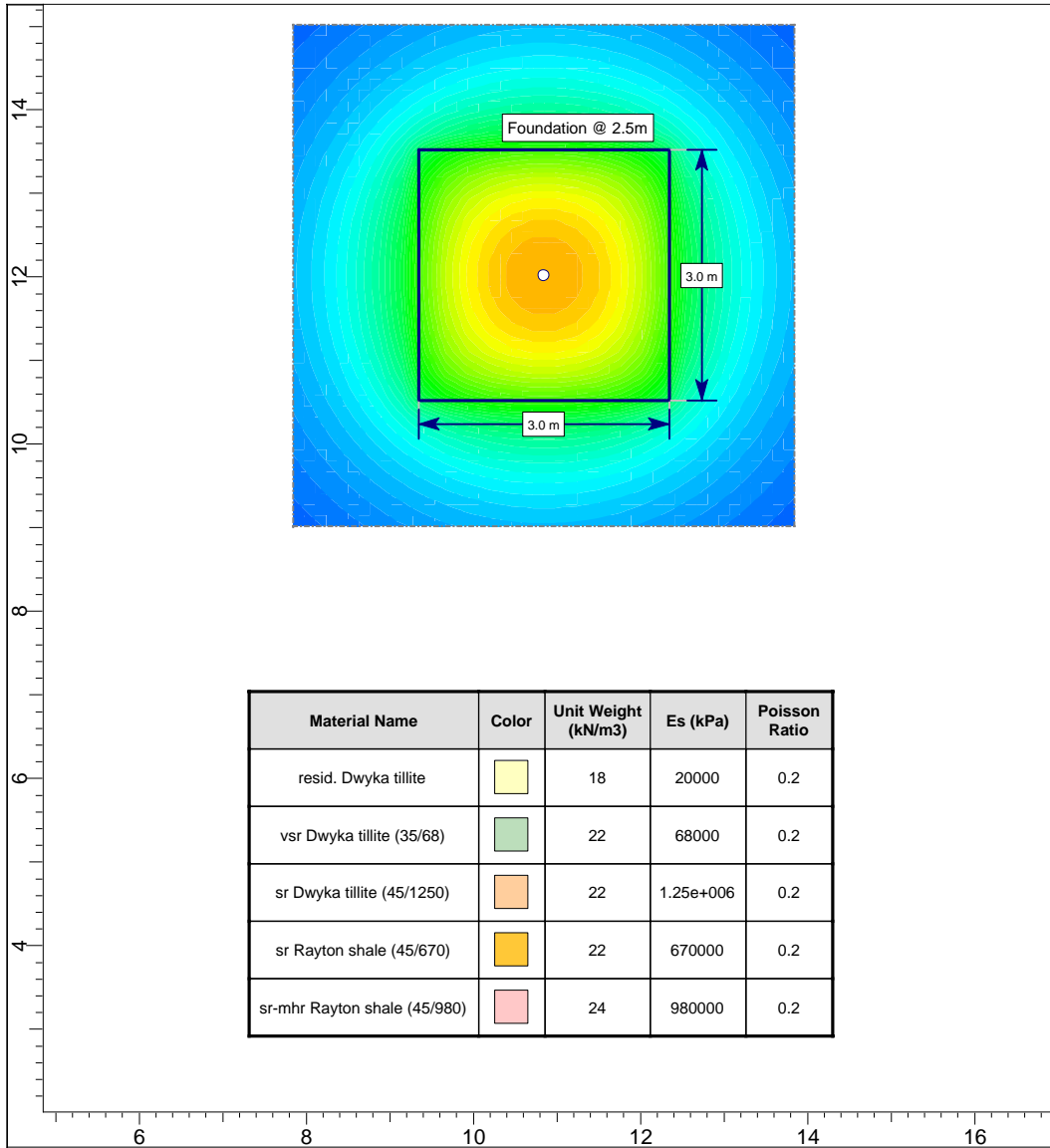
Project			PROJECT BRAVO		
Analysis Description			Predicted settlement for auxiliary bay at BH37; effective pressure 880kPa at 1502.8mamsl		
Drawn By		Henry Schurink	Client		Eskom
Date		09/03/2008, 03:10:46 PM	File Name		auxiliary bay at BH37.s3z
			Figure 8.3a		

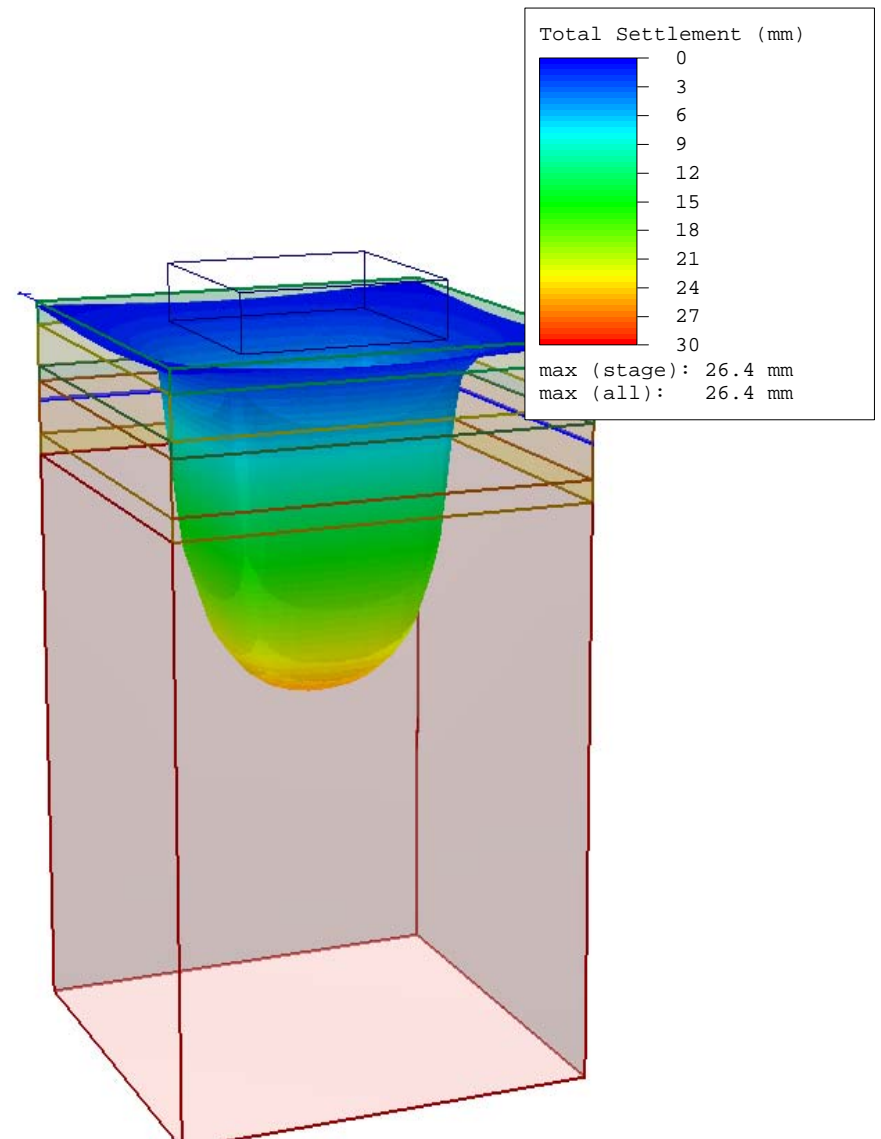
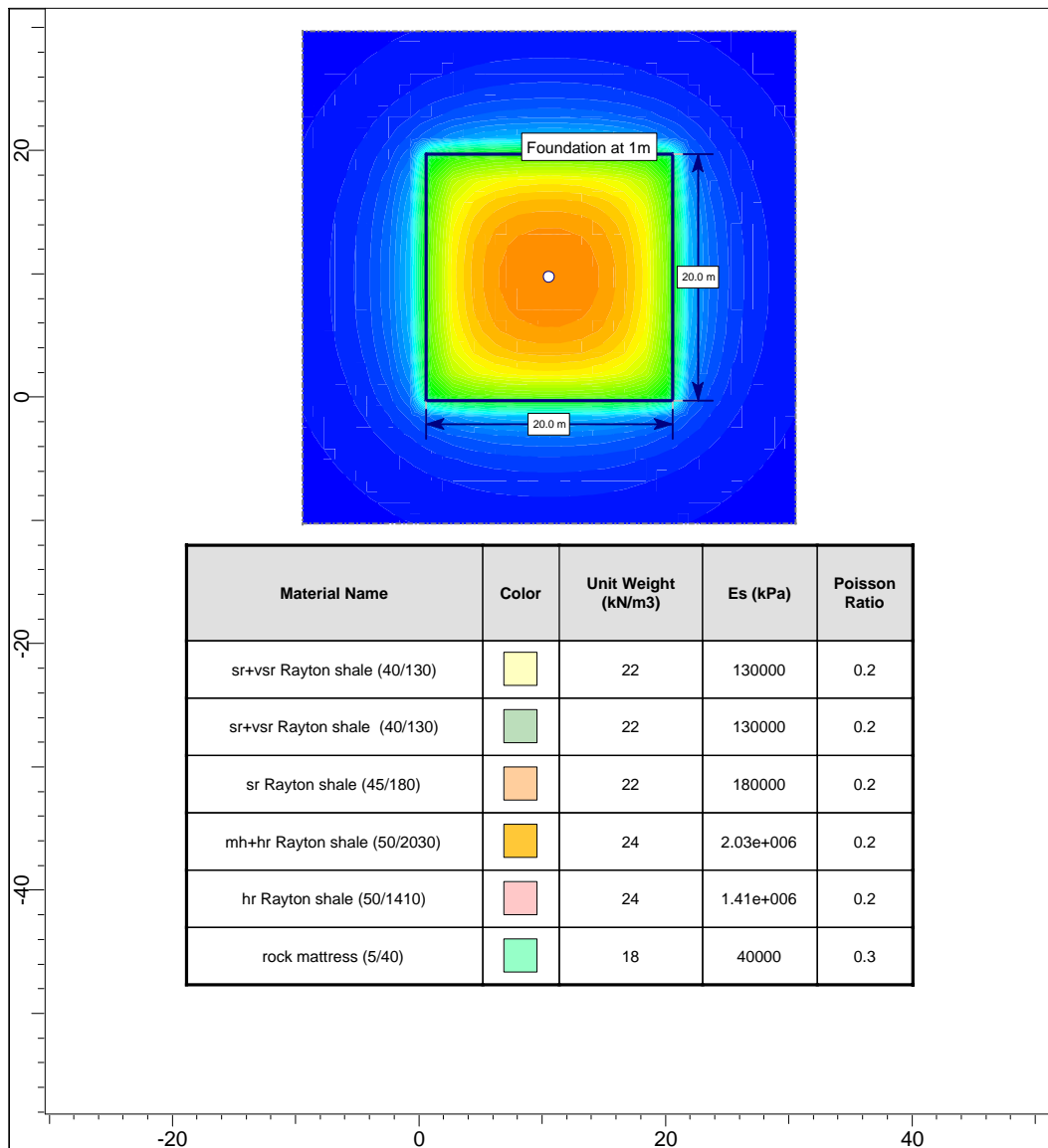


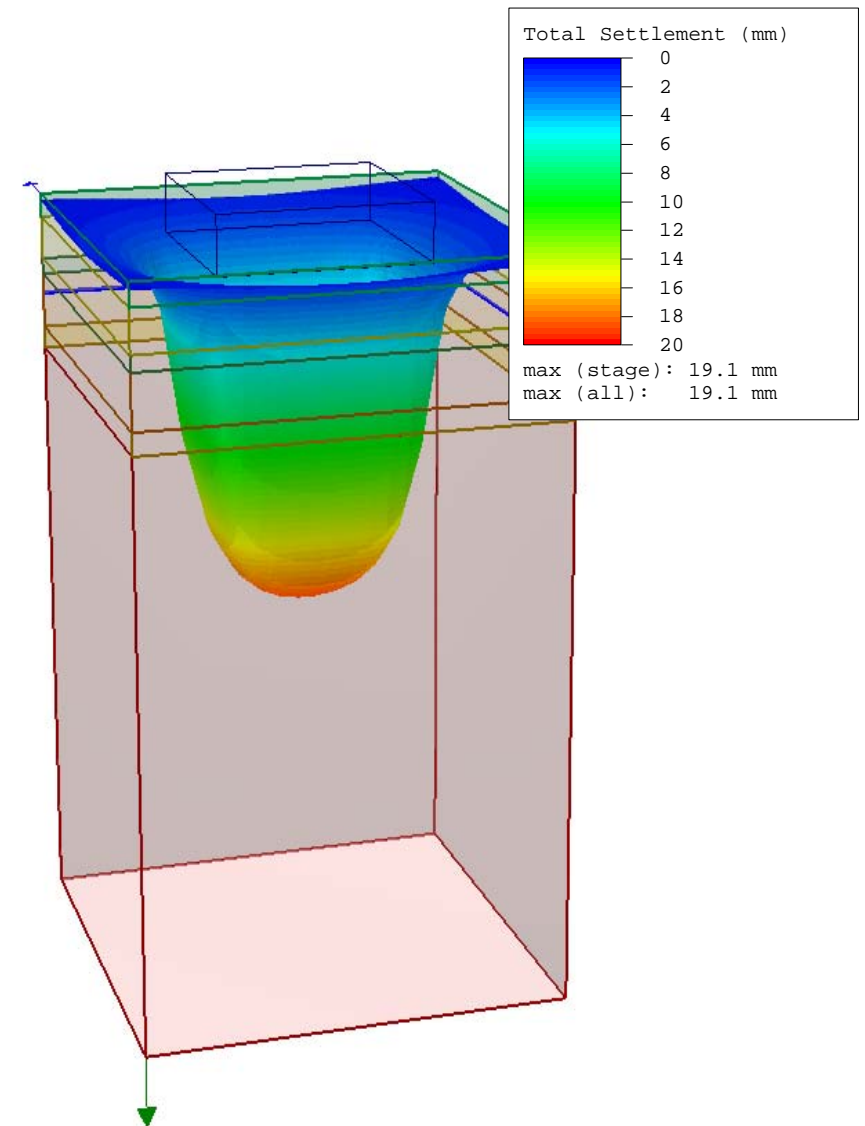
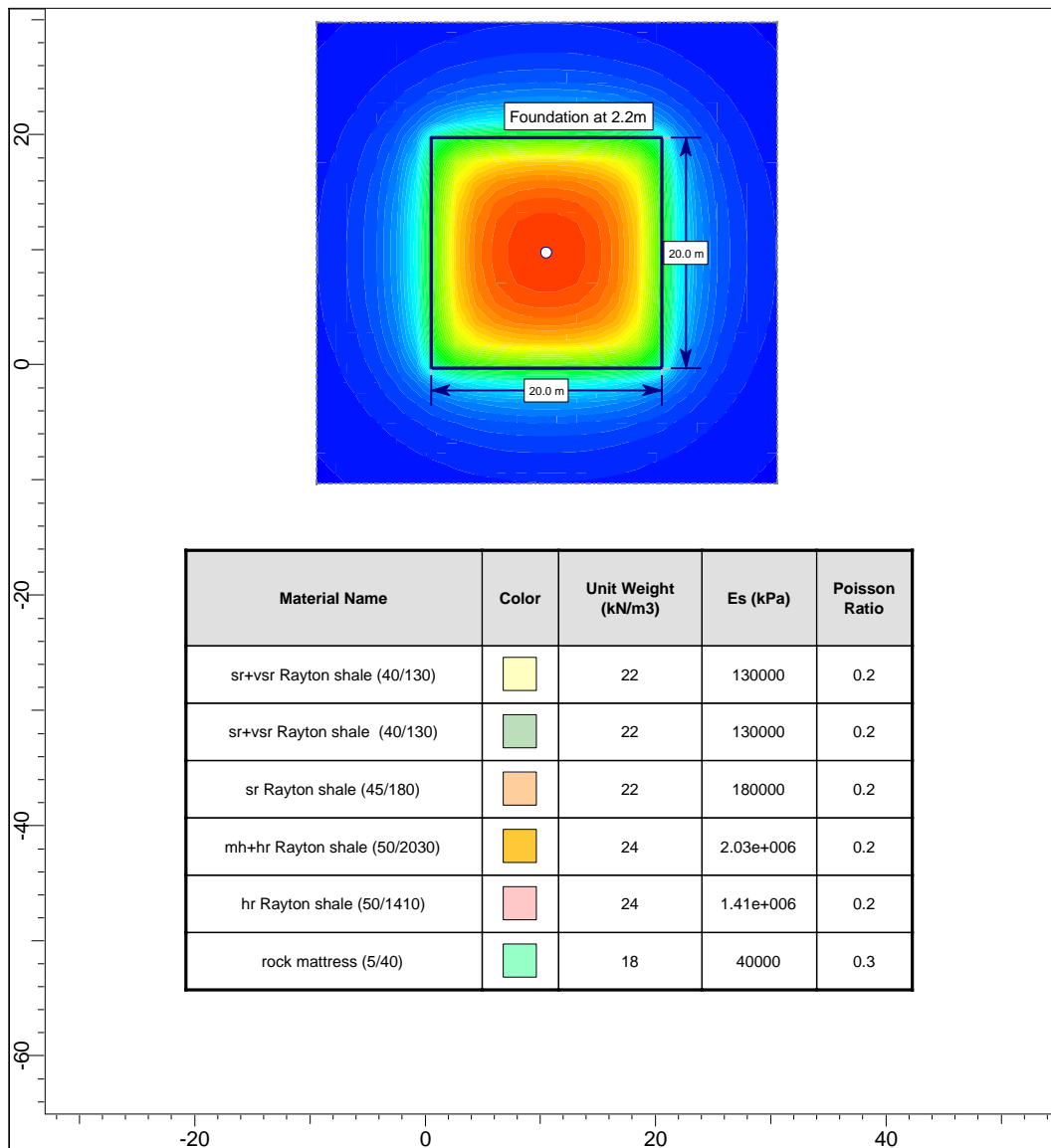
<div><div><div>GEO3</div><div>CC</div></div><div>PO Box 6559 Nelspruit 1200 Tel: (013) 758 1226</div></div> <div></div> <div>SETTLE3D 1.006</div>	Project				PROJECT BRAVO				
	Analysis Description		Predicted settlement for auxiliary bay at BH39; effective pressure 980kPa at terrace level 1502.8mamsl						
	Drawn By		Henry Schurink		Client		Eskom		
	Date		09/03/2008, 04:28:57 PM		File Name		auxiliary bay at BH39.s3z		Figure 8.3b

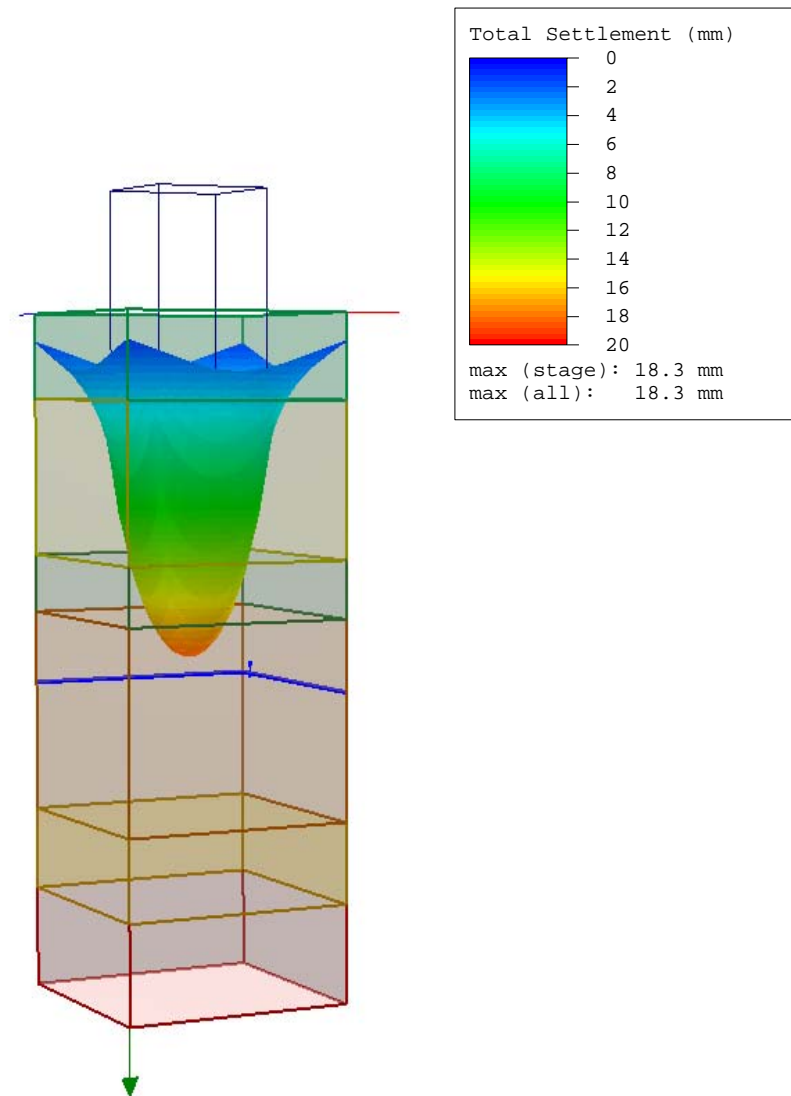
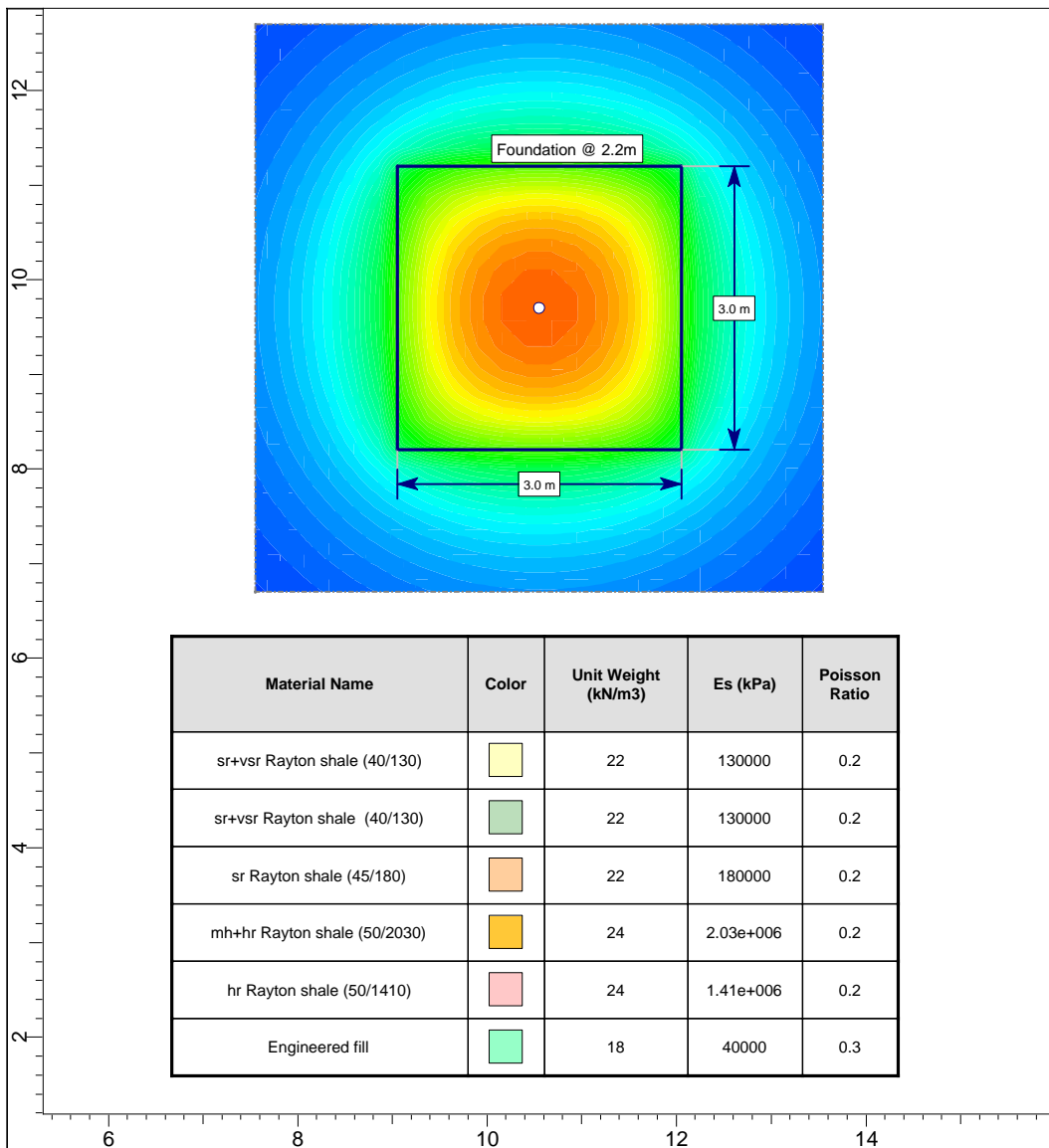


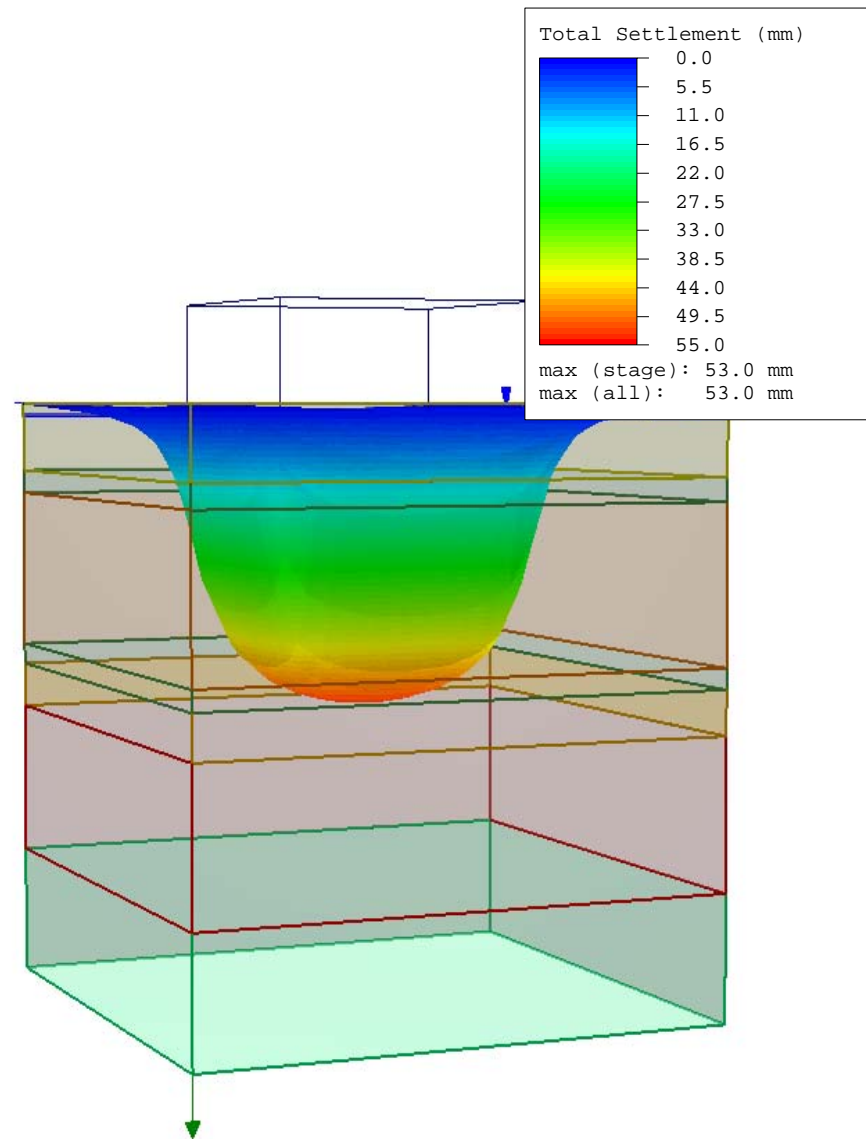
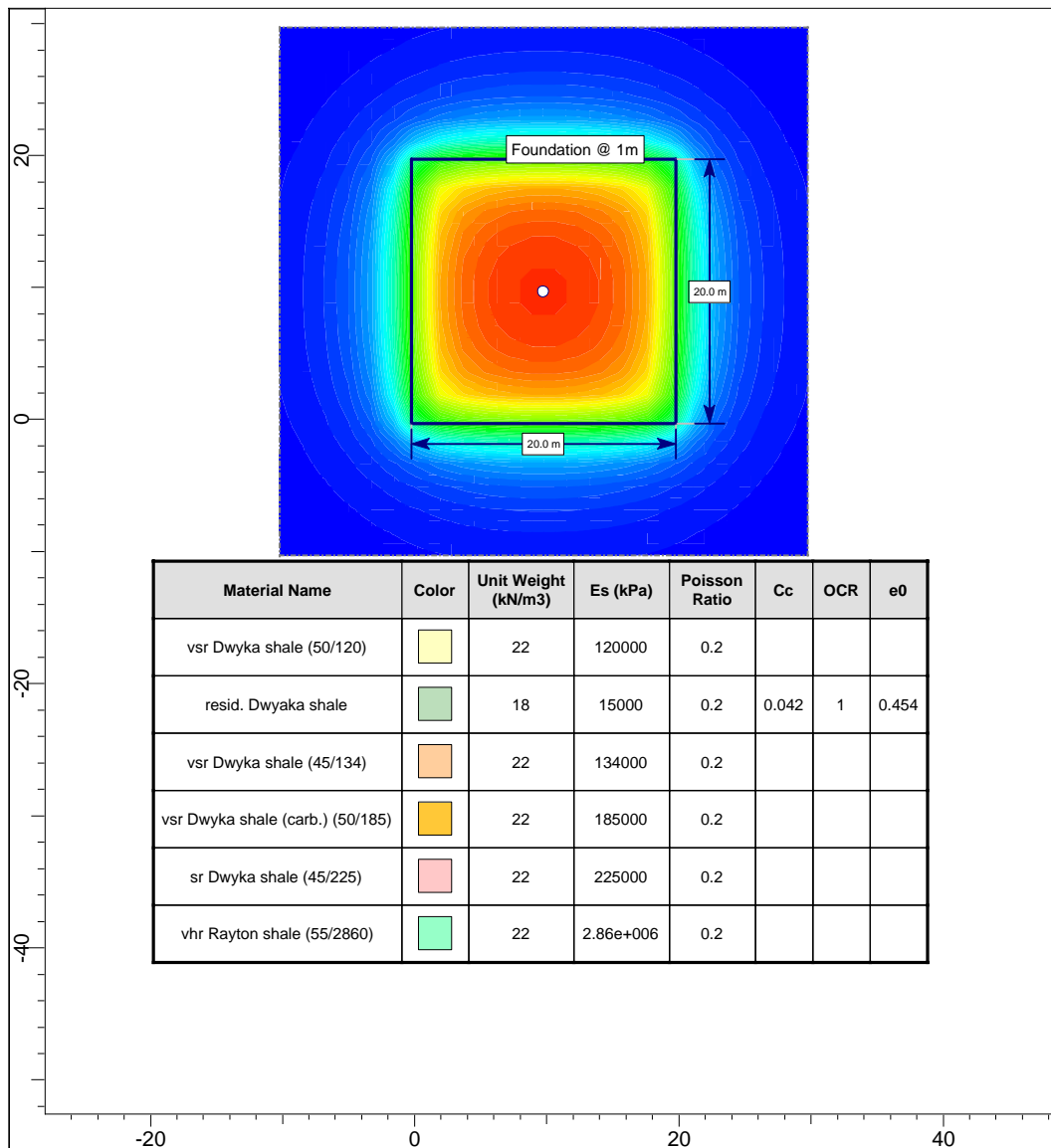


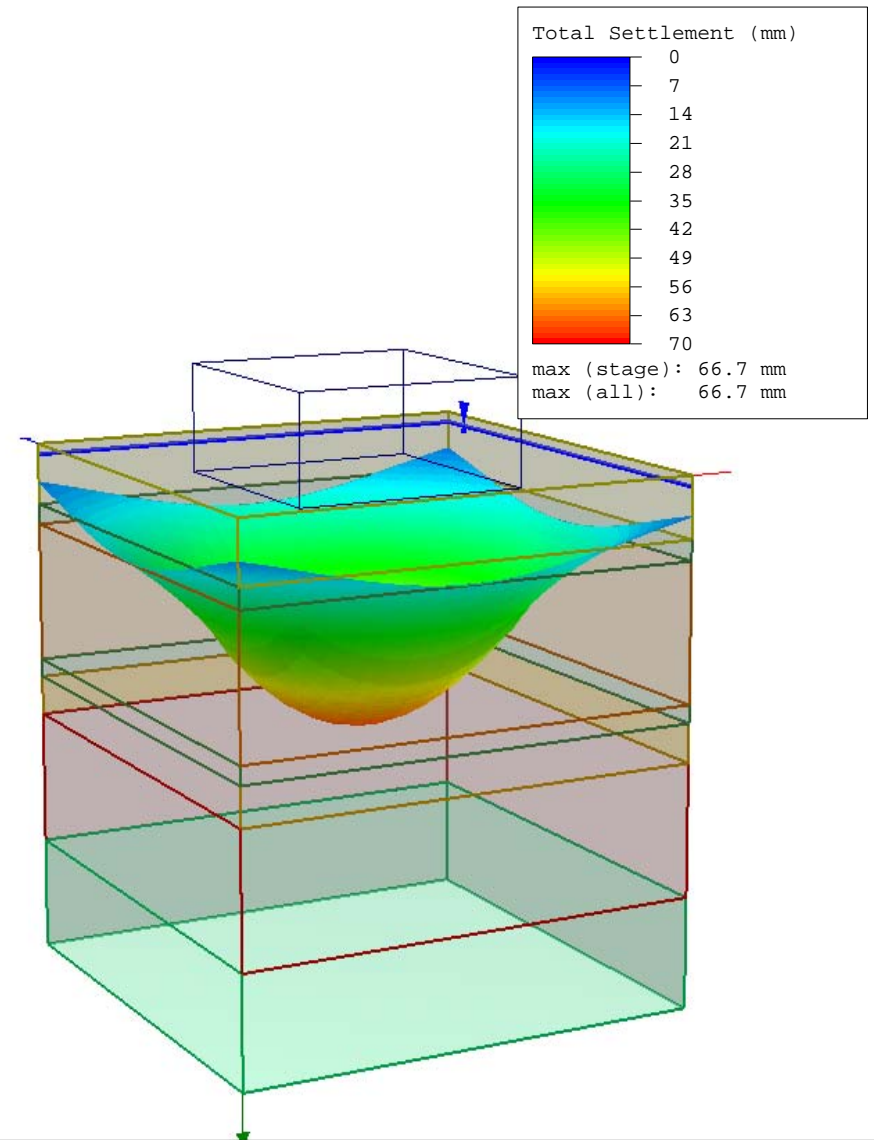
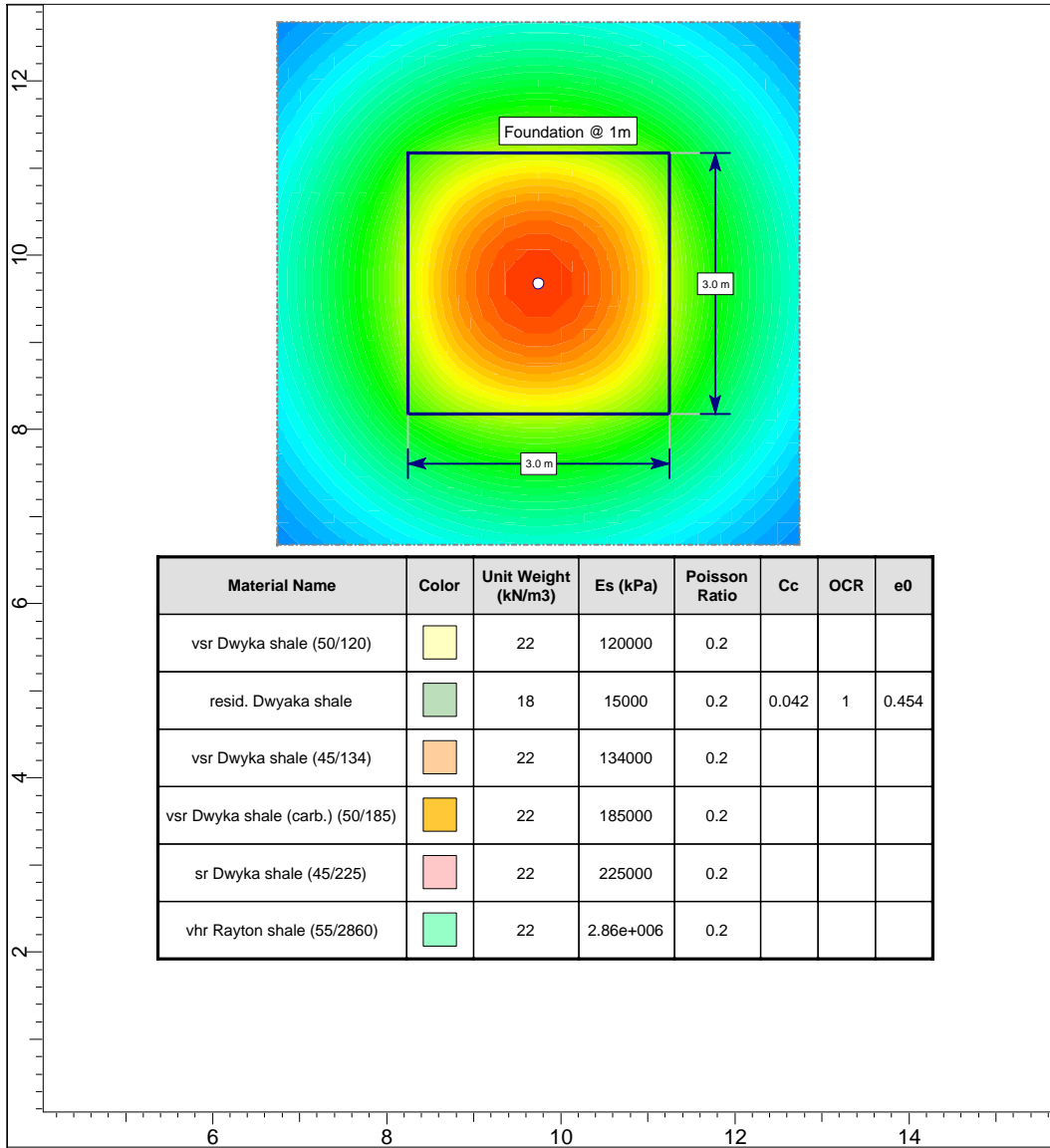


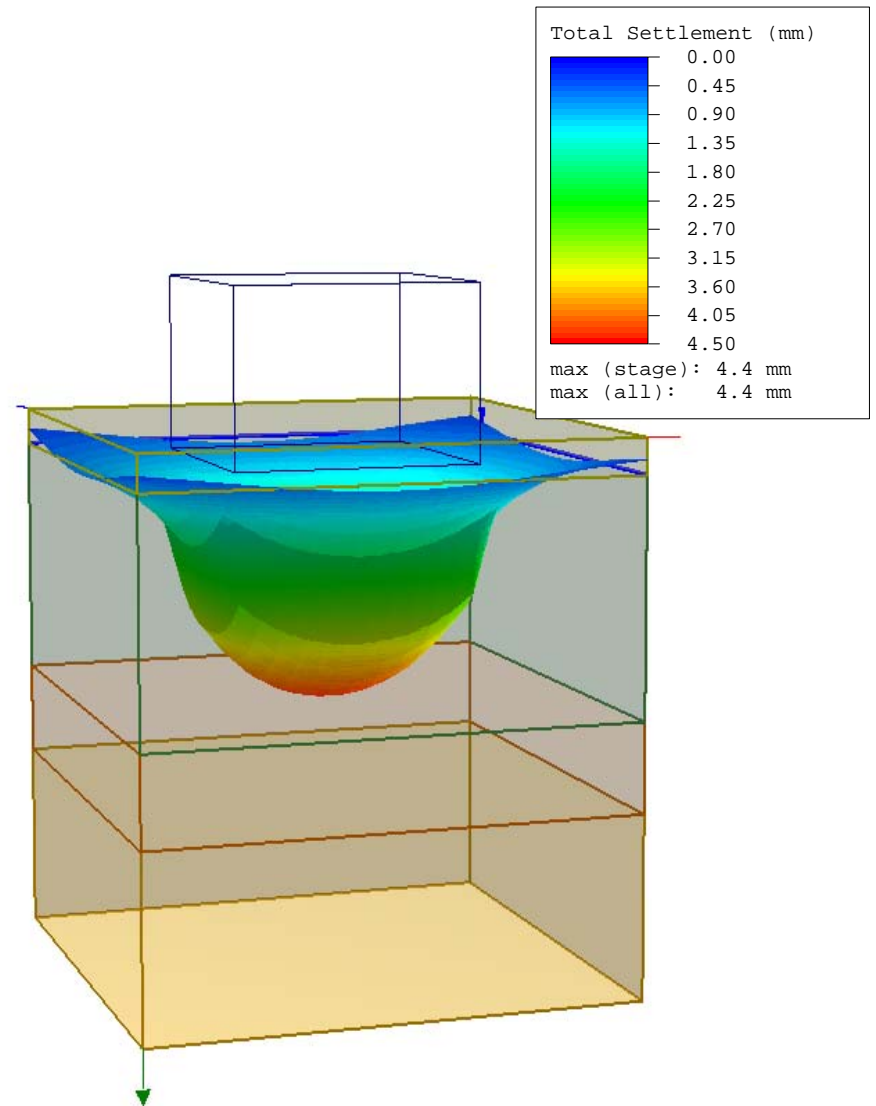
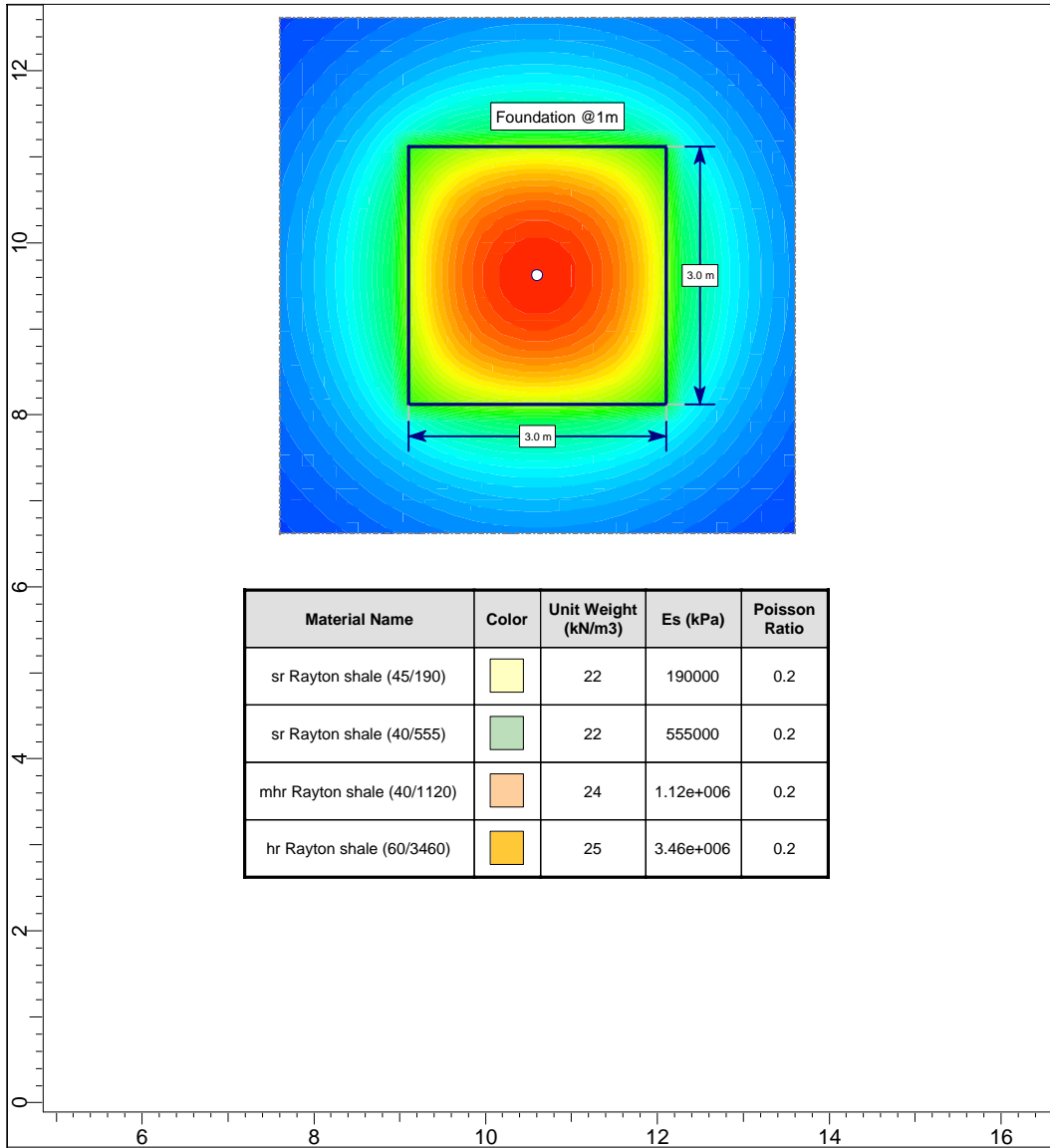


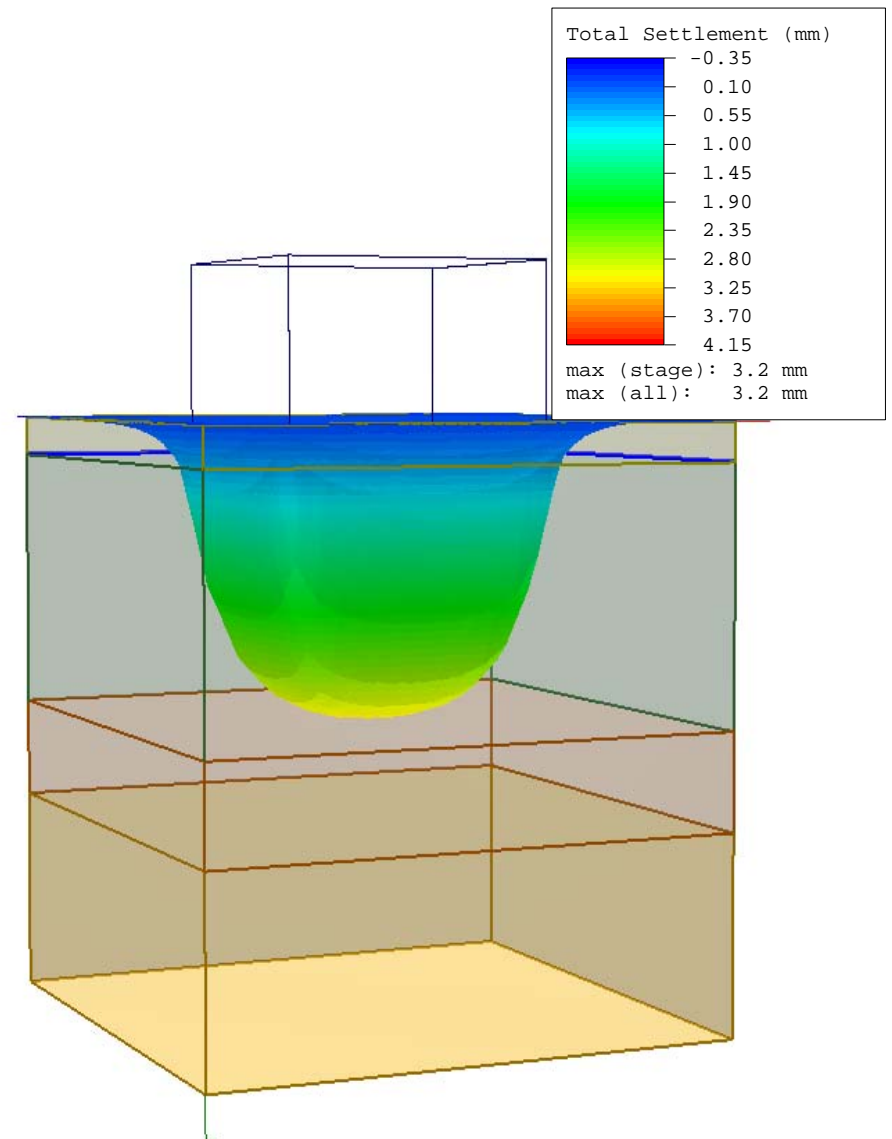
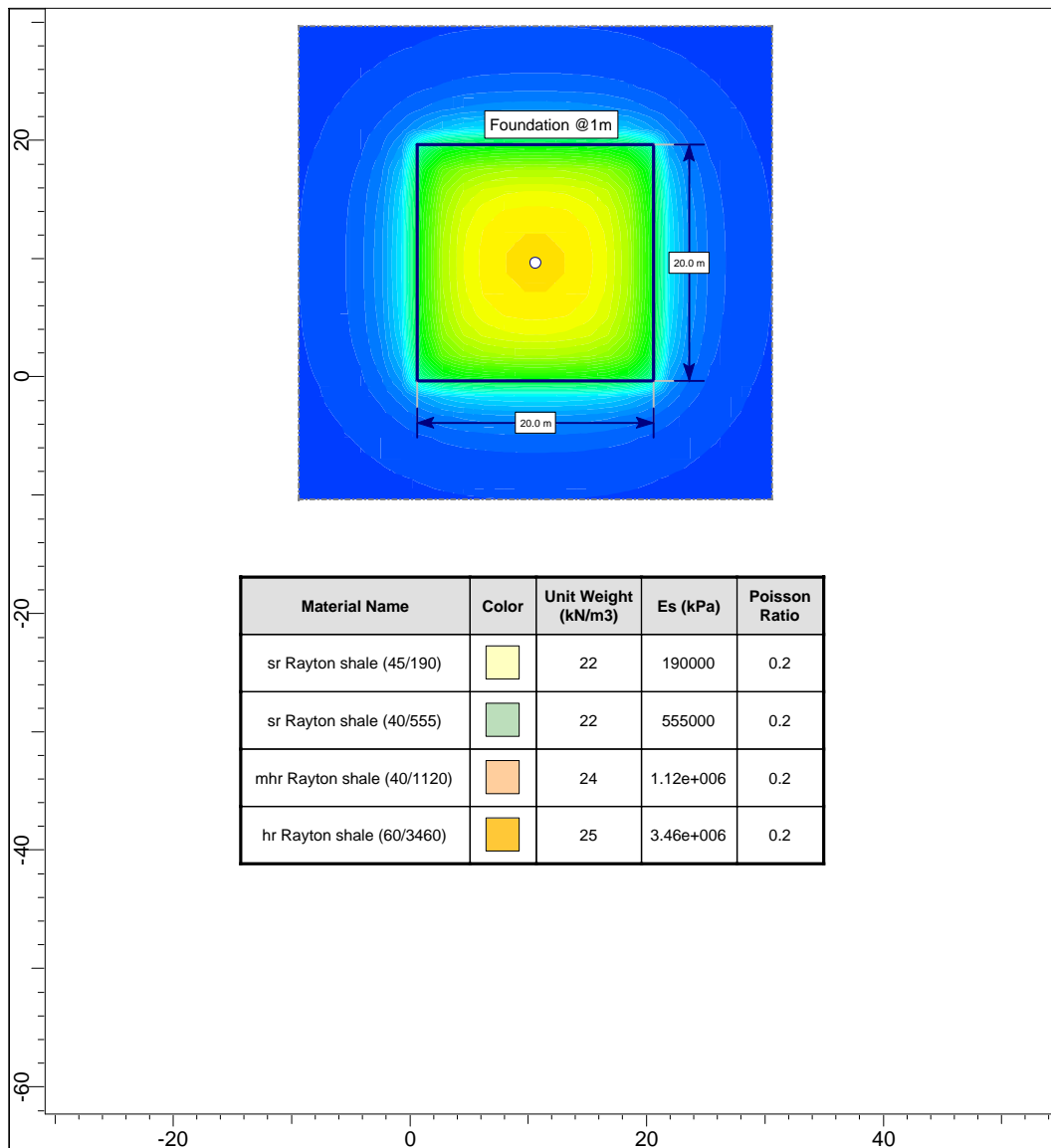


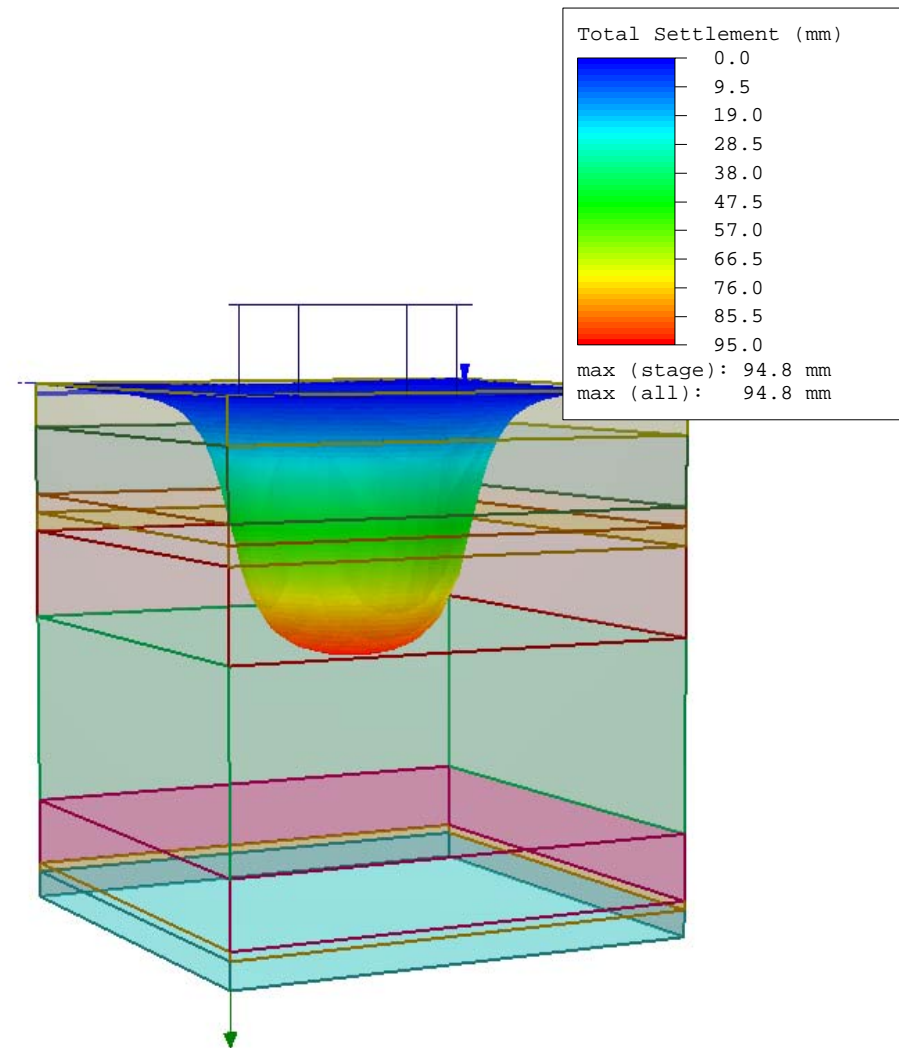
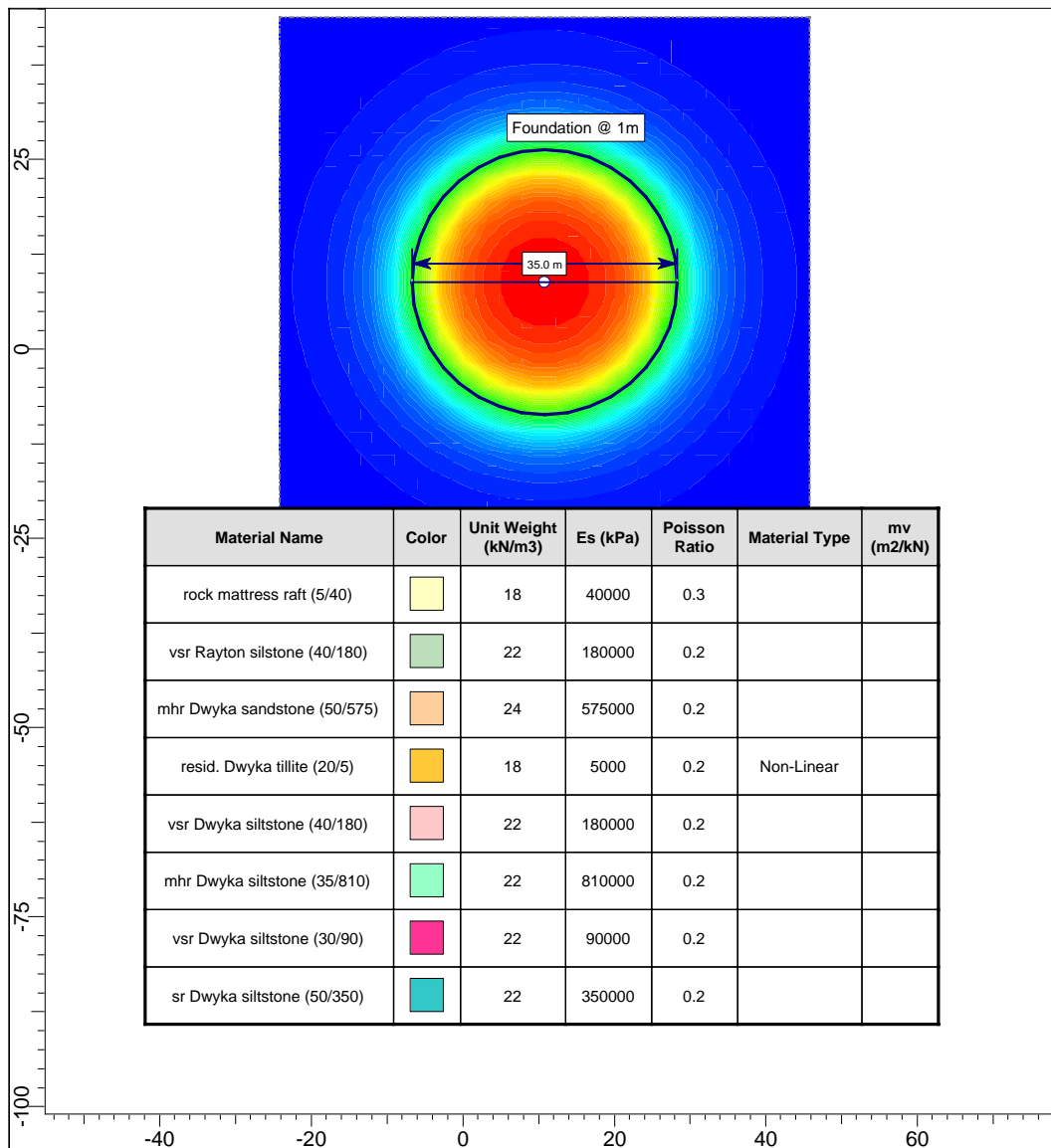


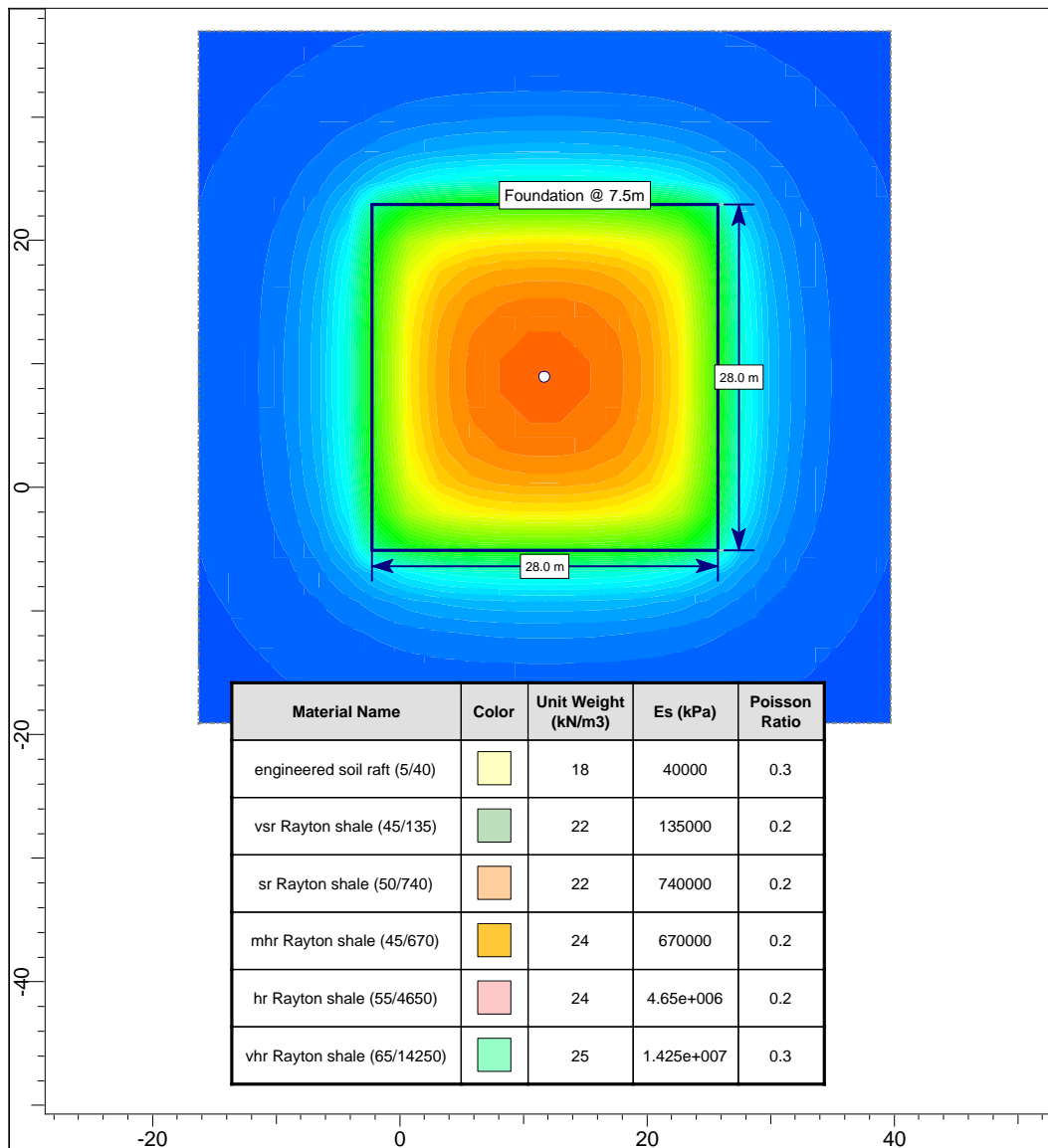




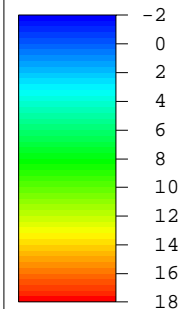




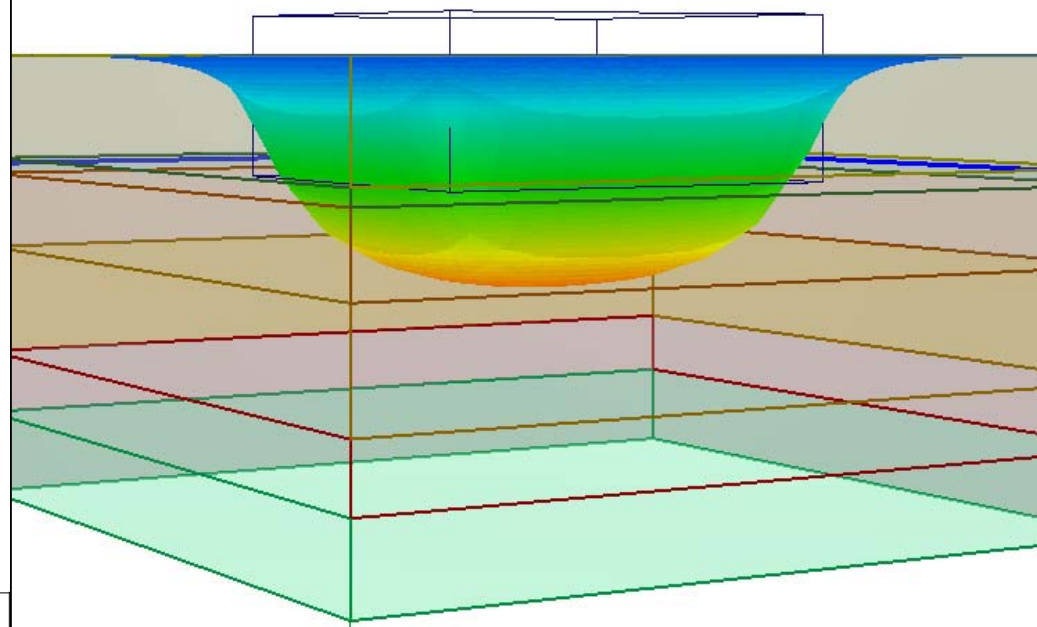




Total Settlement (mm)



max (stage): 16.1 mm
max (all): 16.1 mm



GEO3 CC
PO Box 6559
Nelspruit
1200
Tel: (013) 758 1226

Project

PROJECT BRAVO

Analysis Description

Predicted settlement for chimney at BH14; effective pressure 1000kPa at 1502.8mamsl

Drawn By

Henry Schurink

Client

Eskom

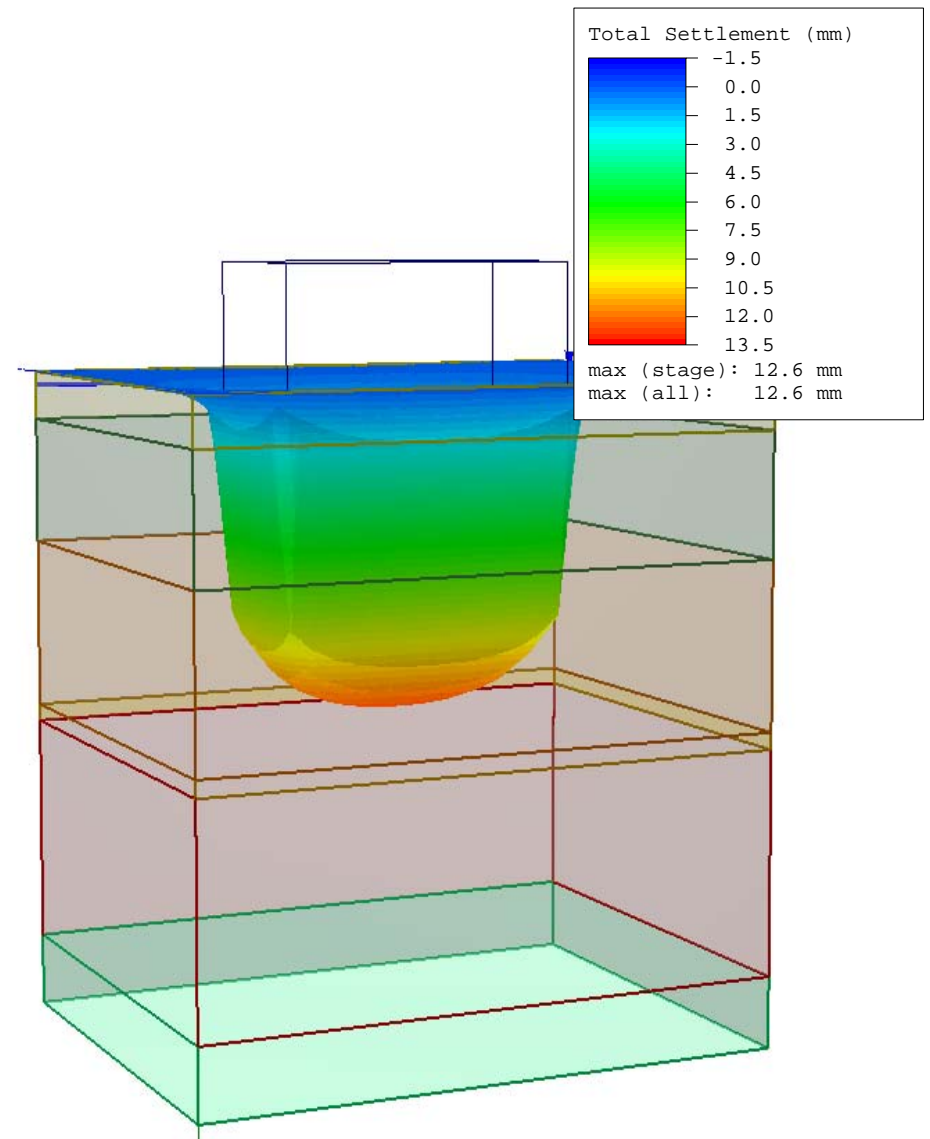
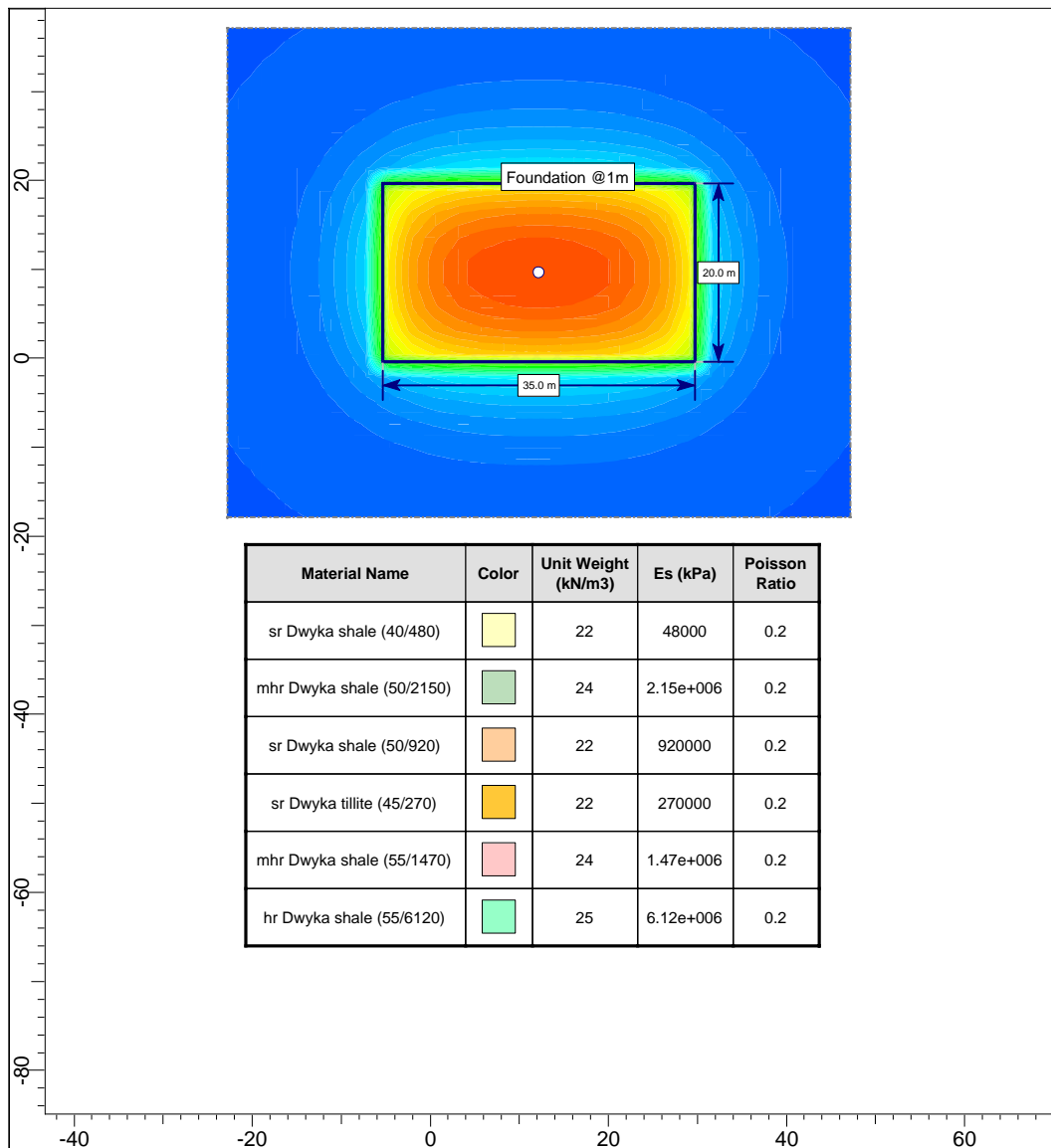
Date

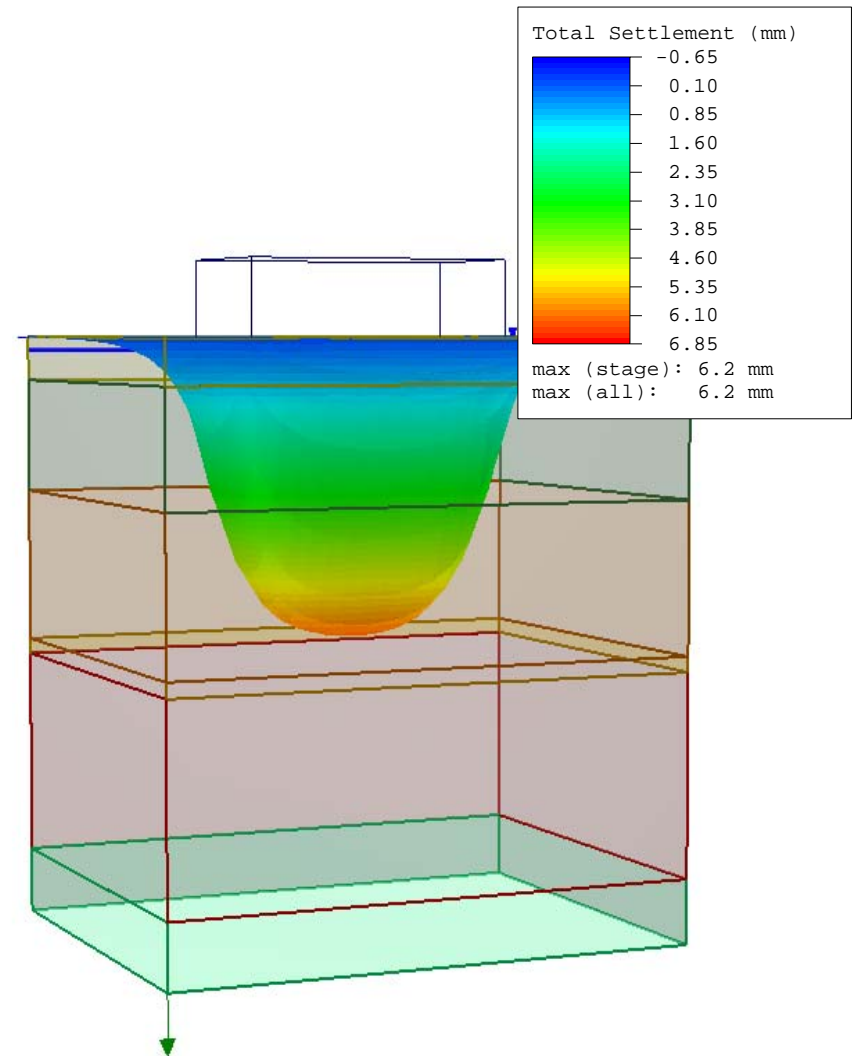
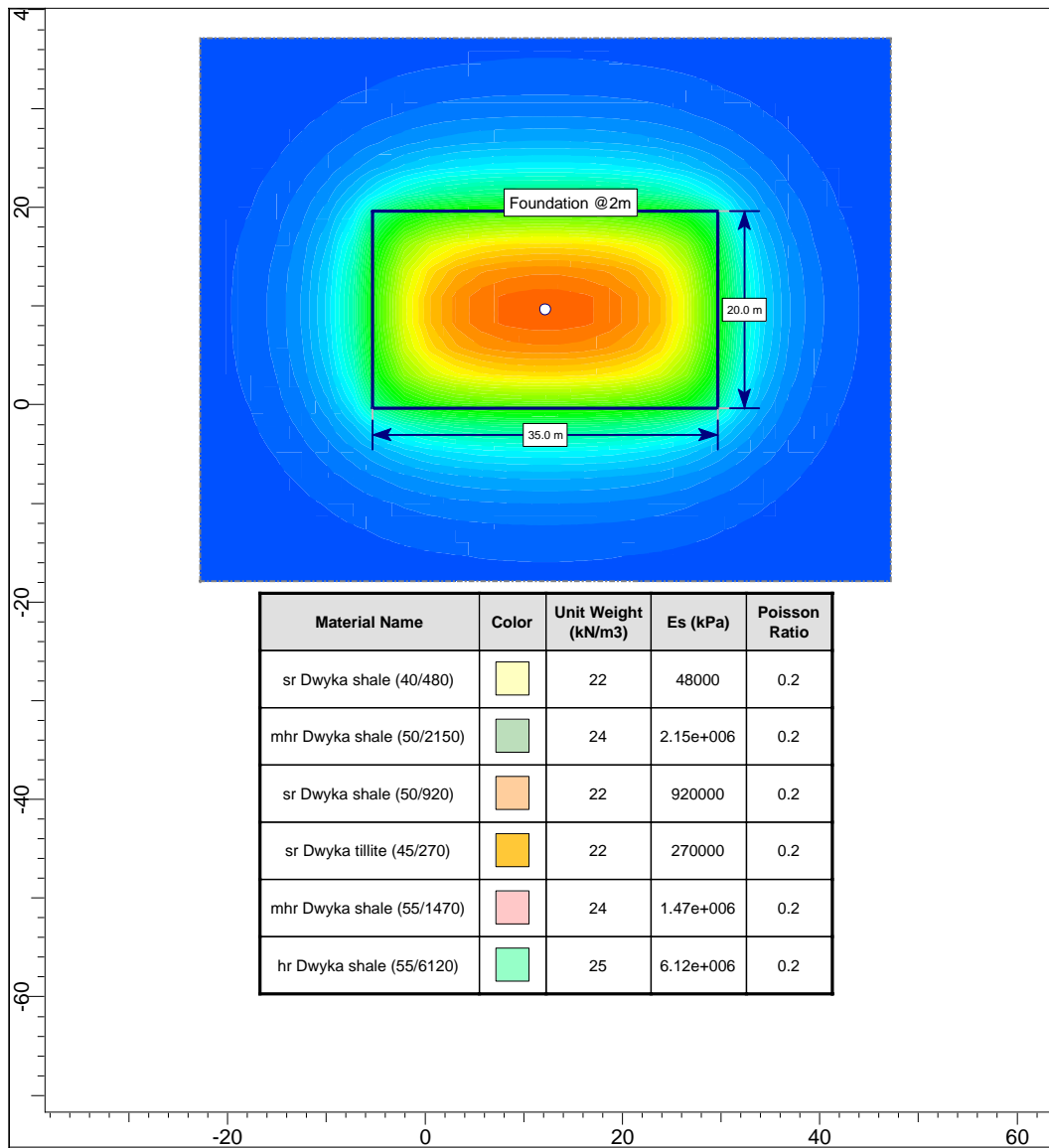
10/03/2008, 10:45:36 AM

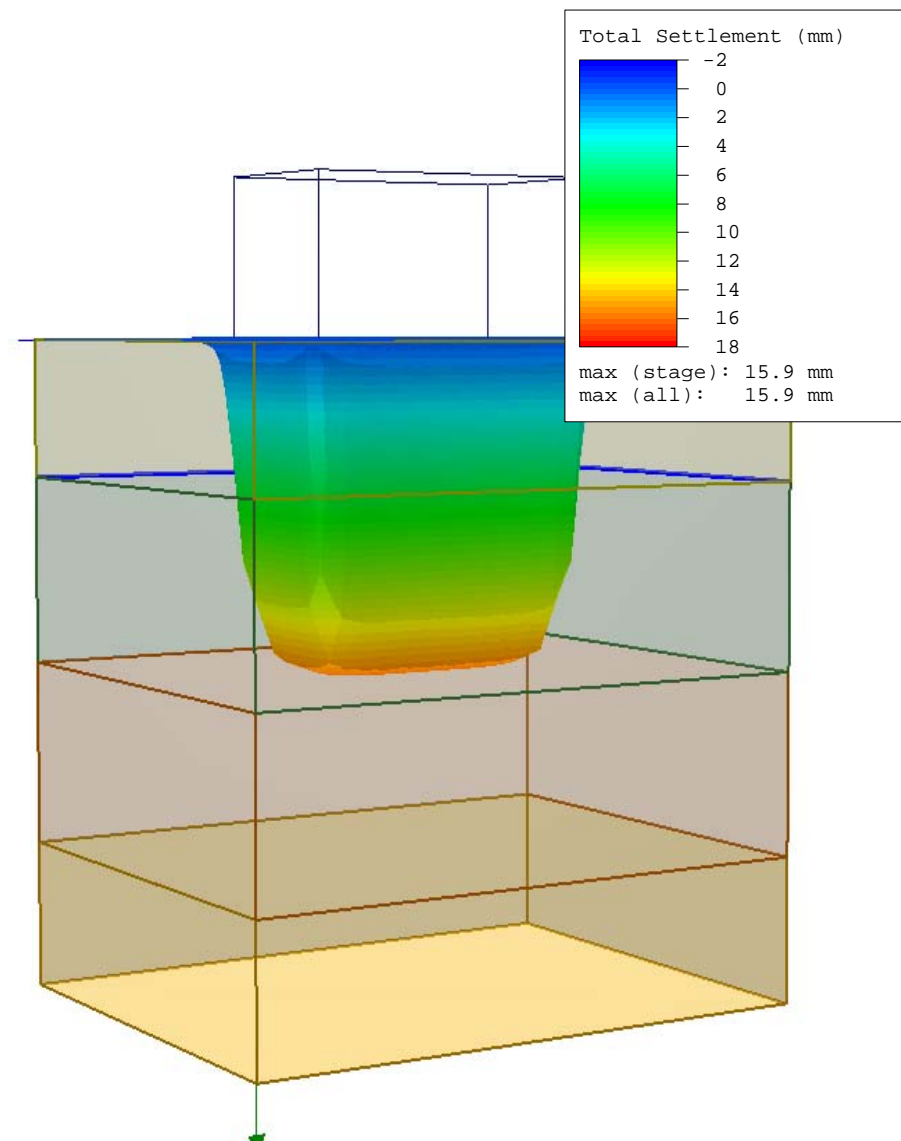
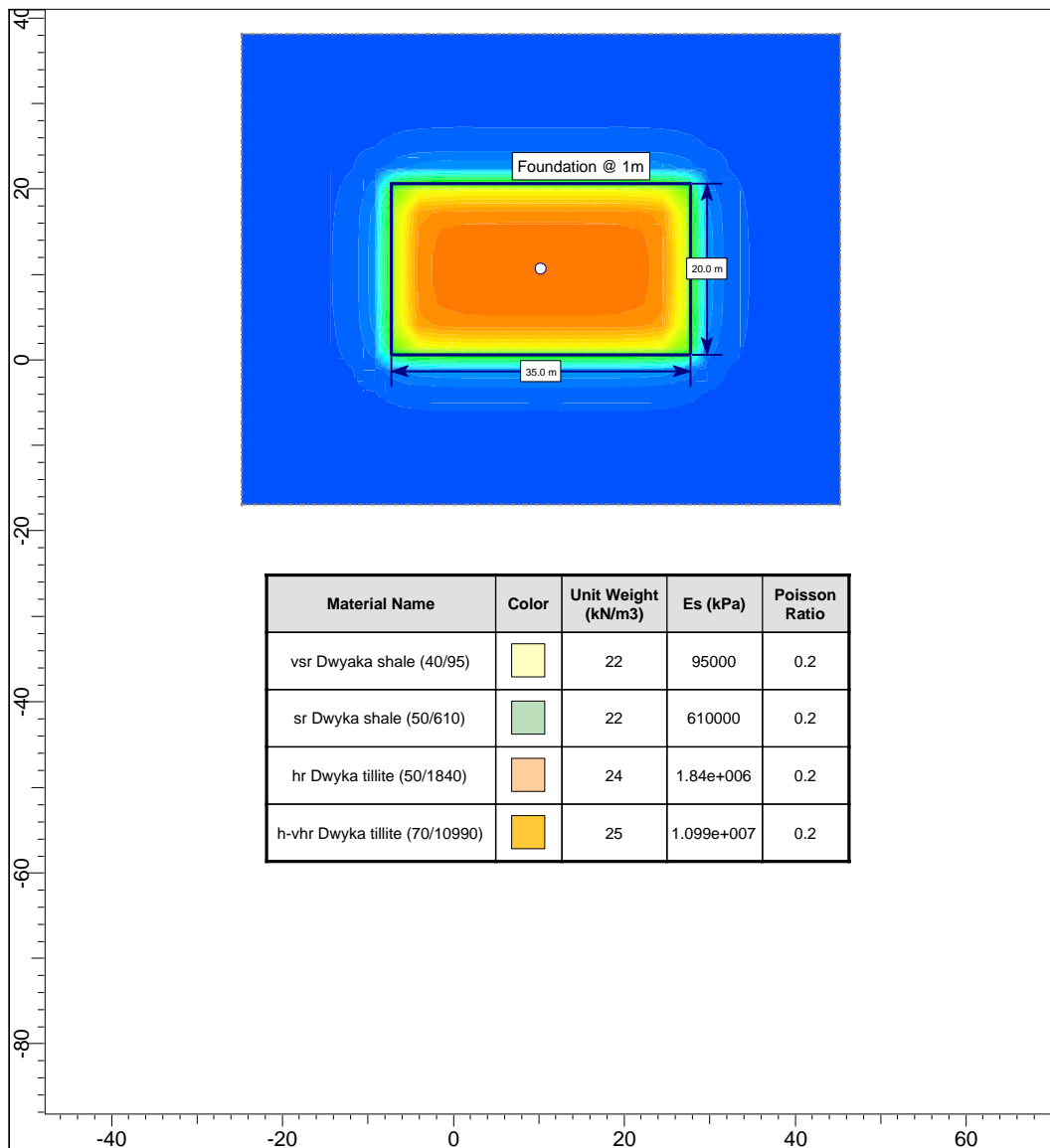
File Name

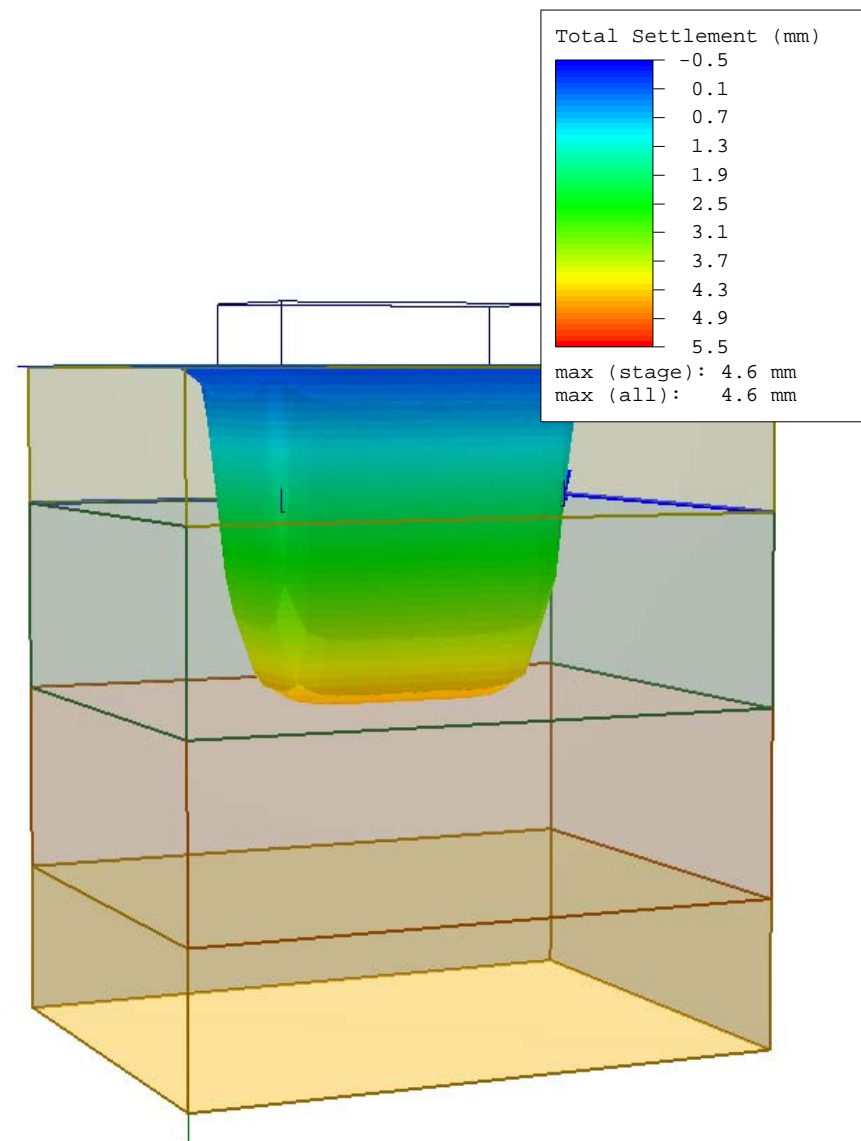
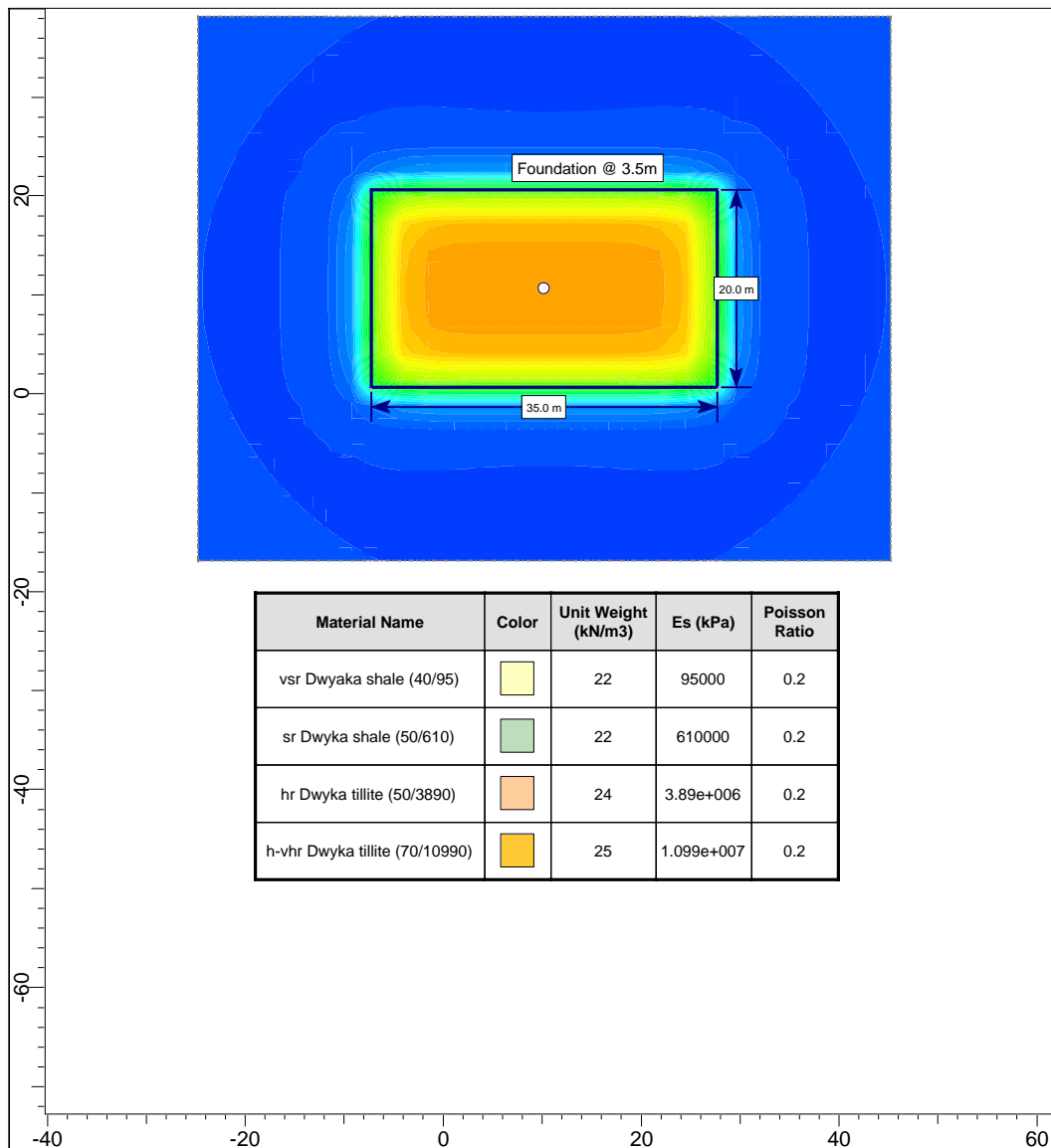
chimney at BH14.s3z

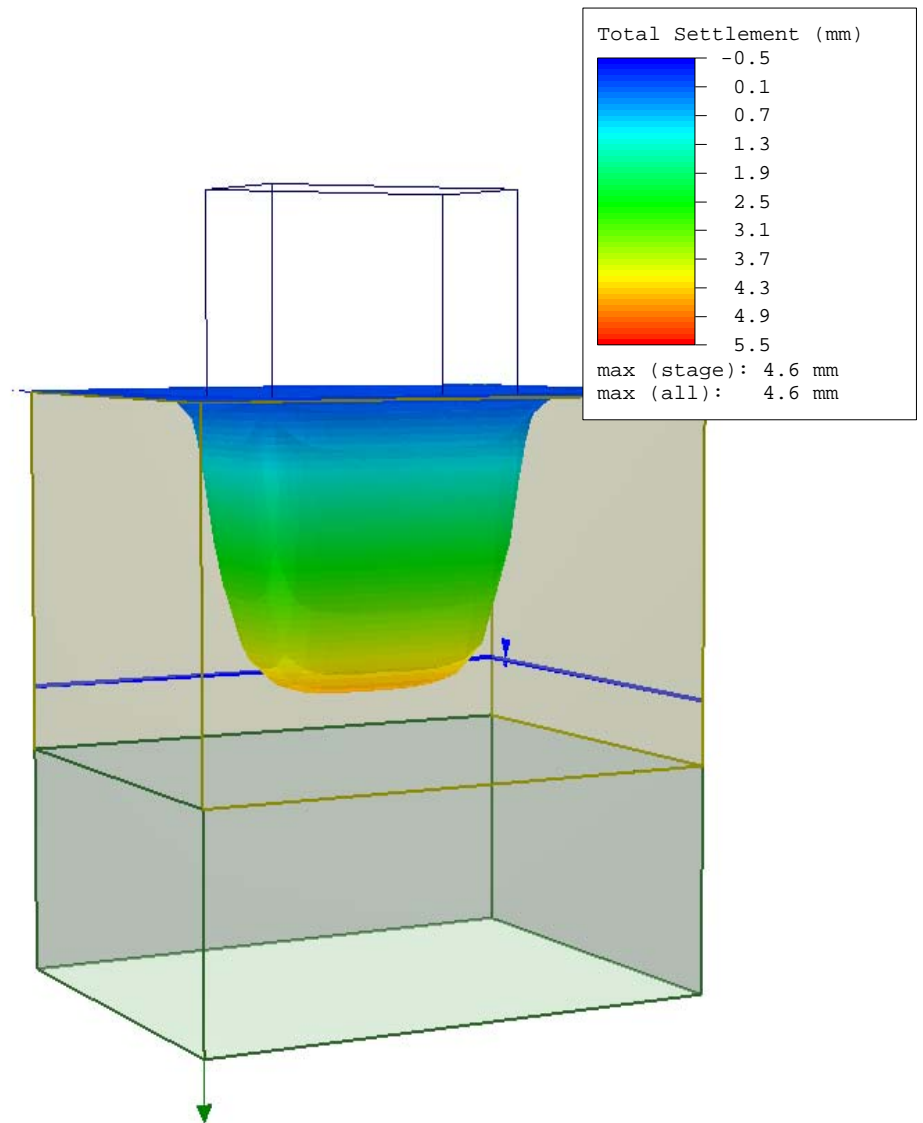
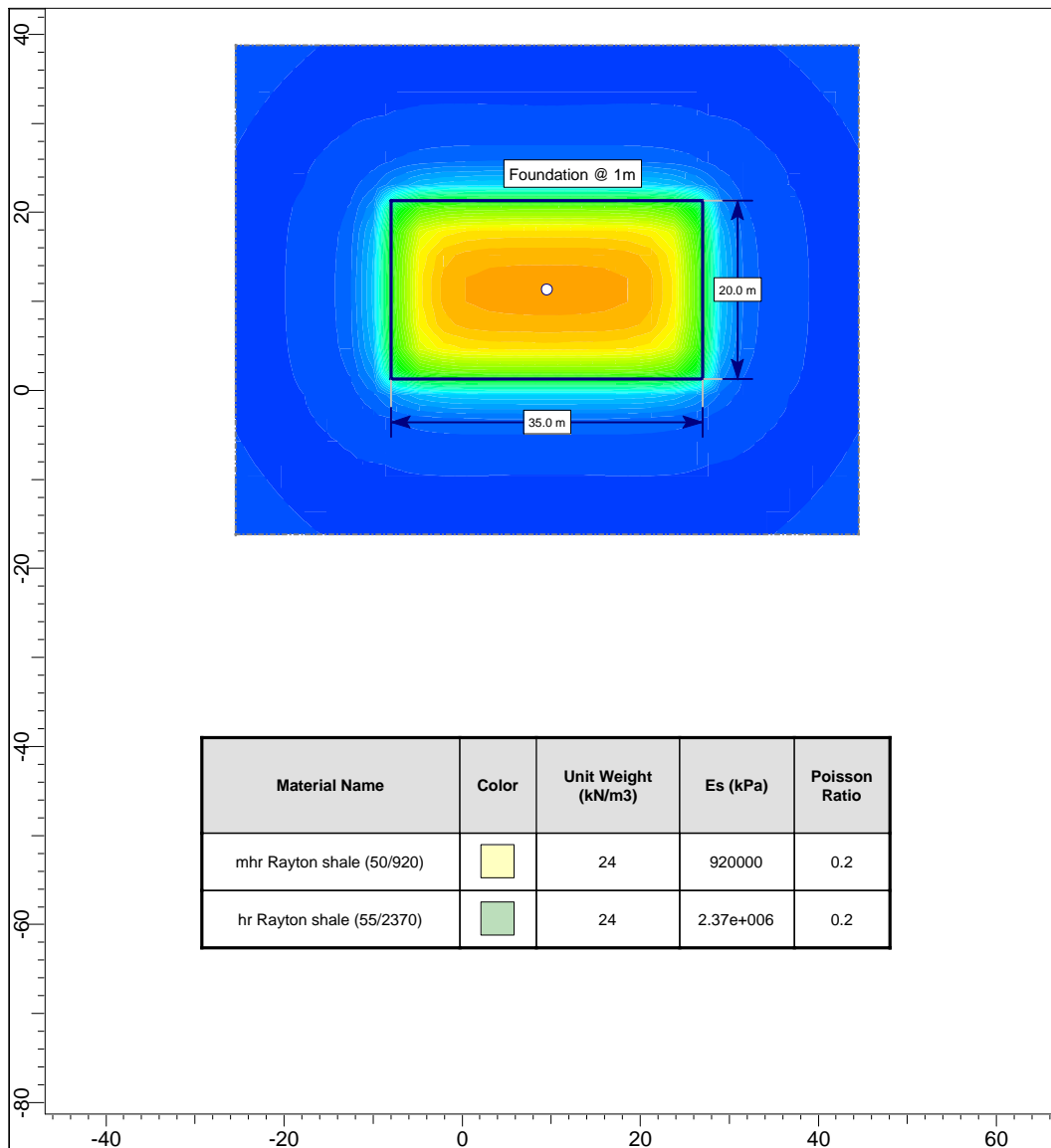
Figure 8.6a

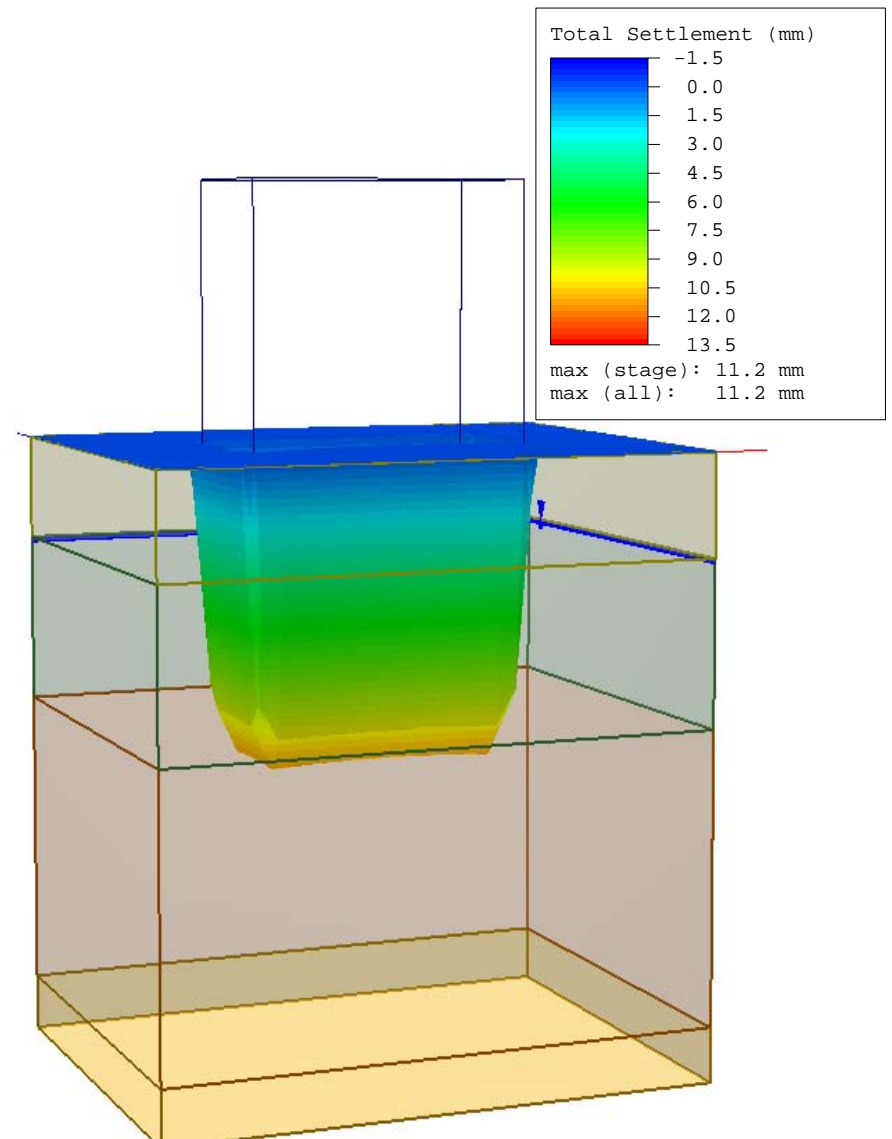
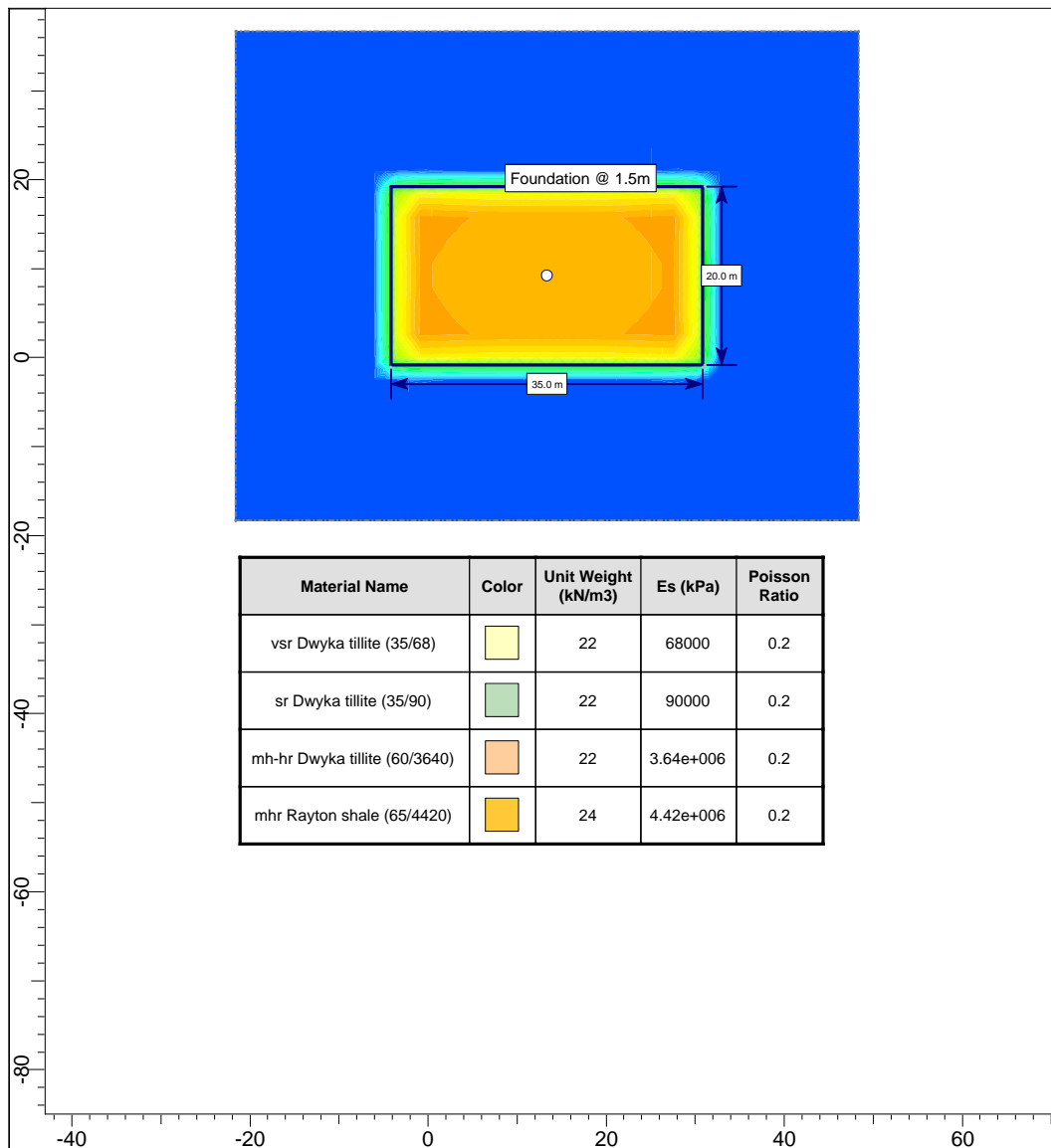


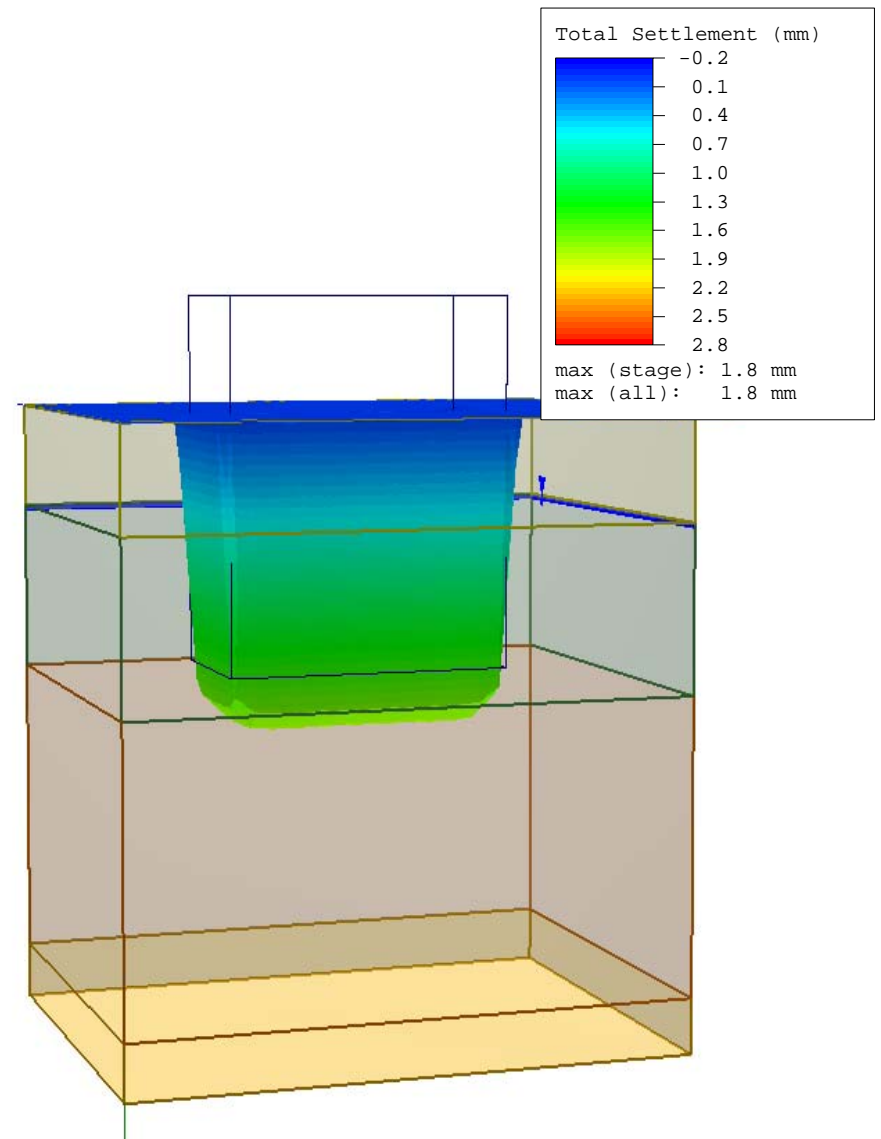
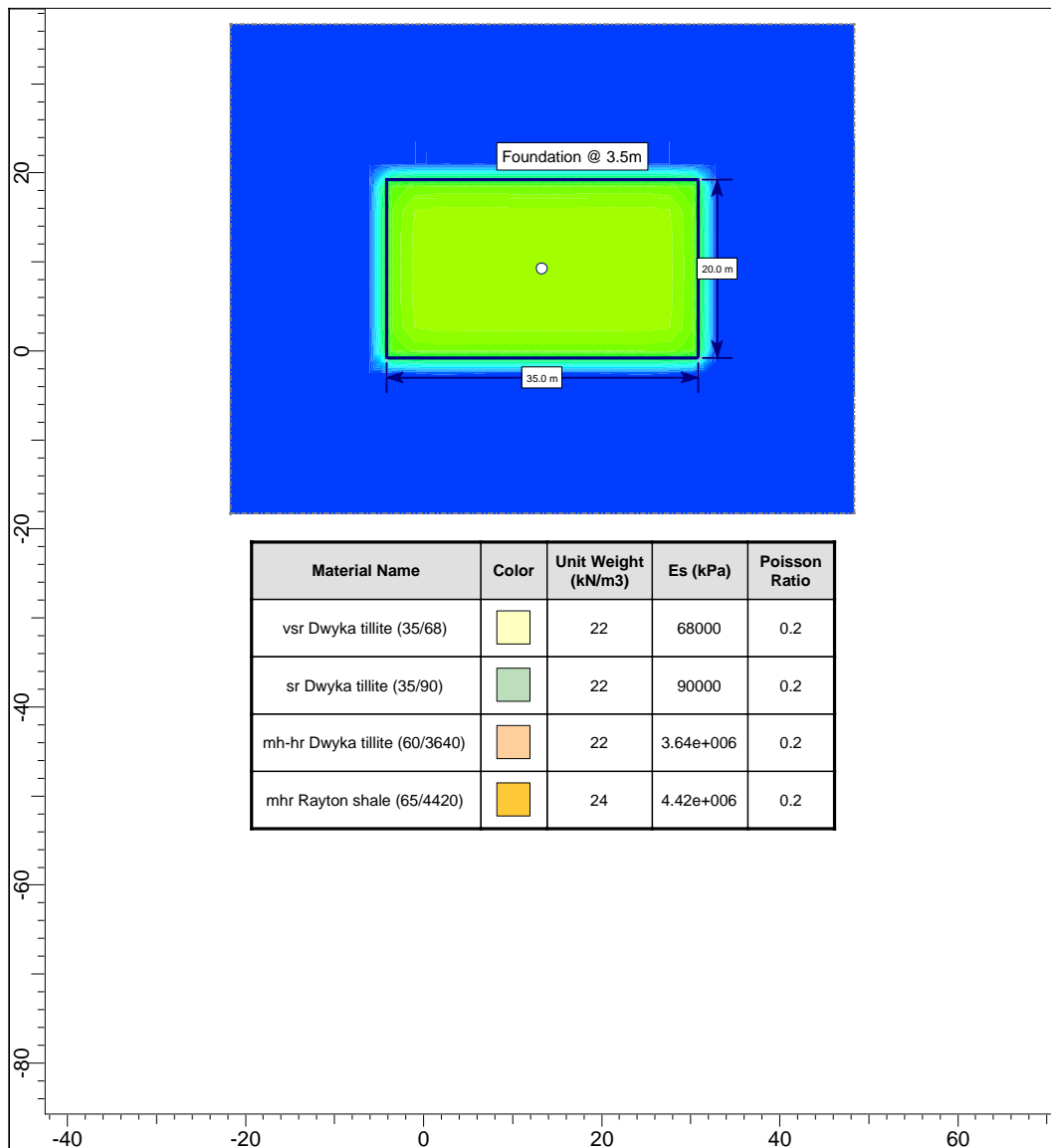


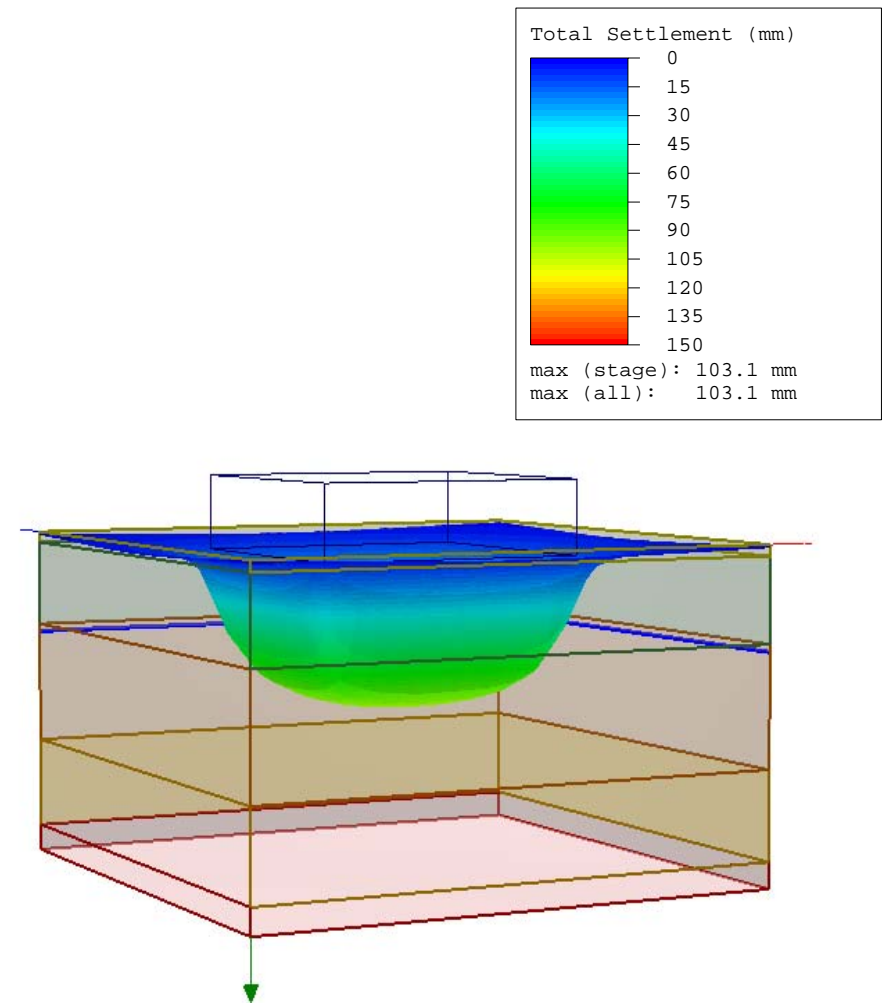
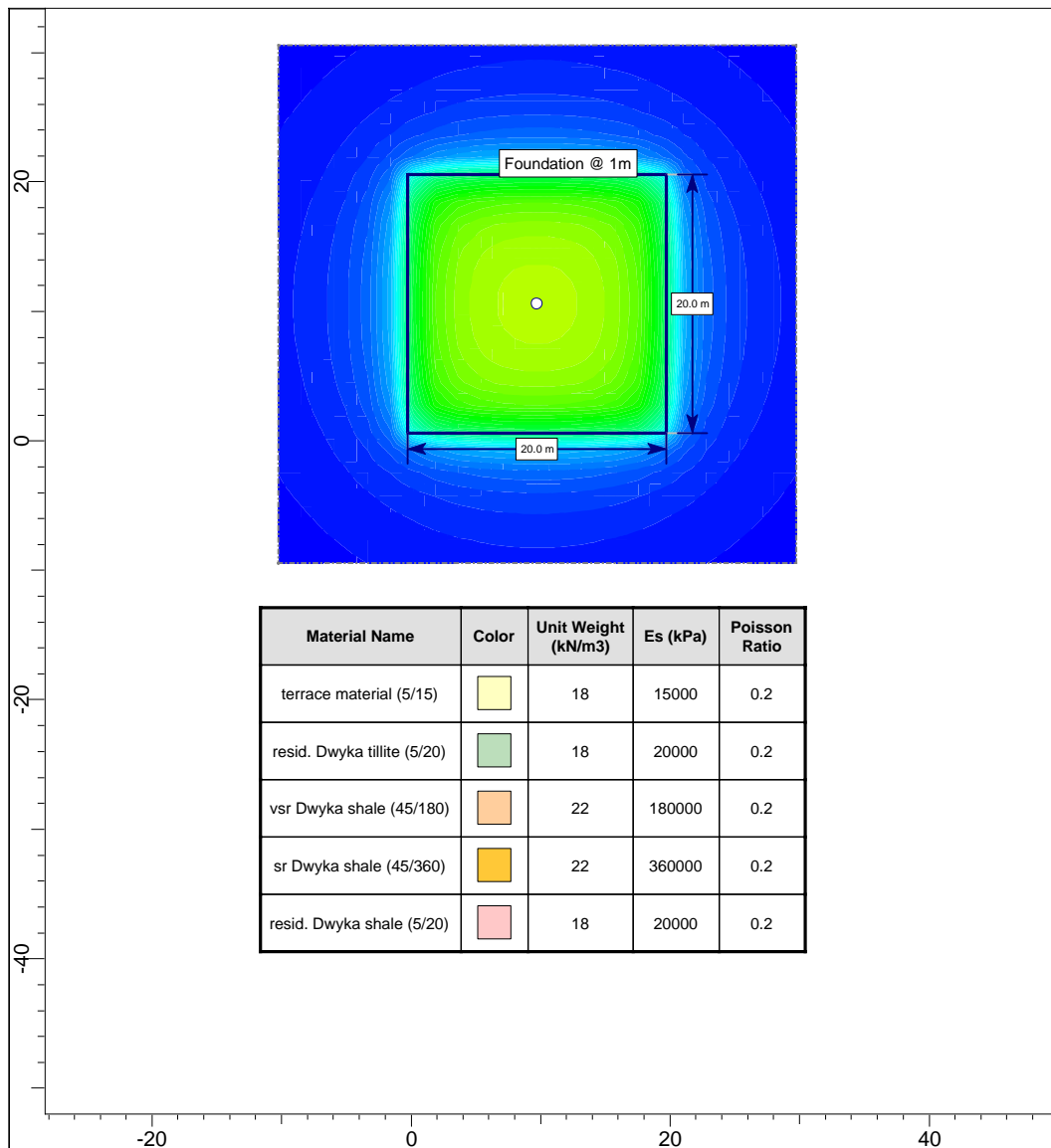


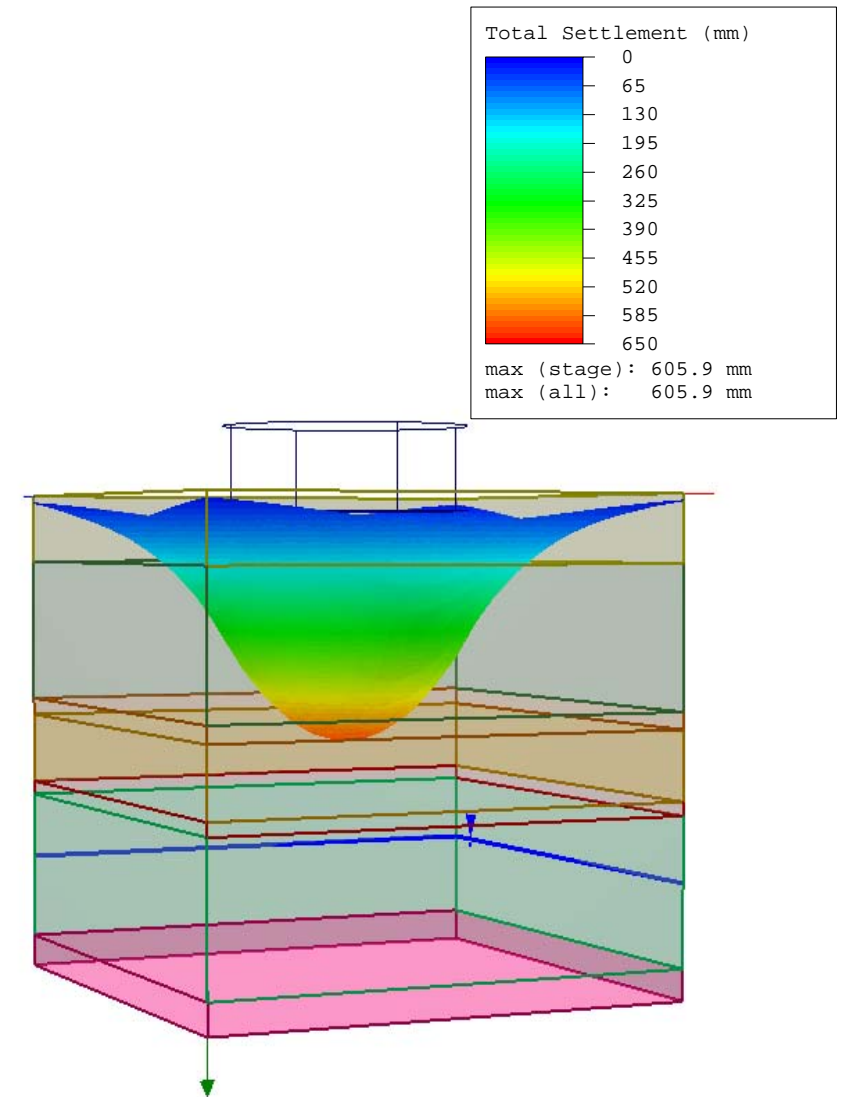
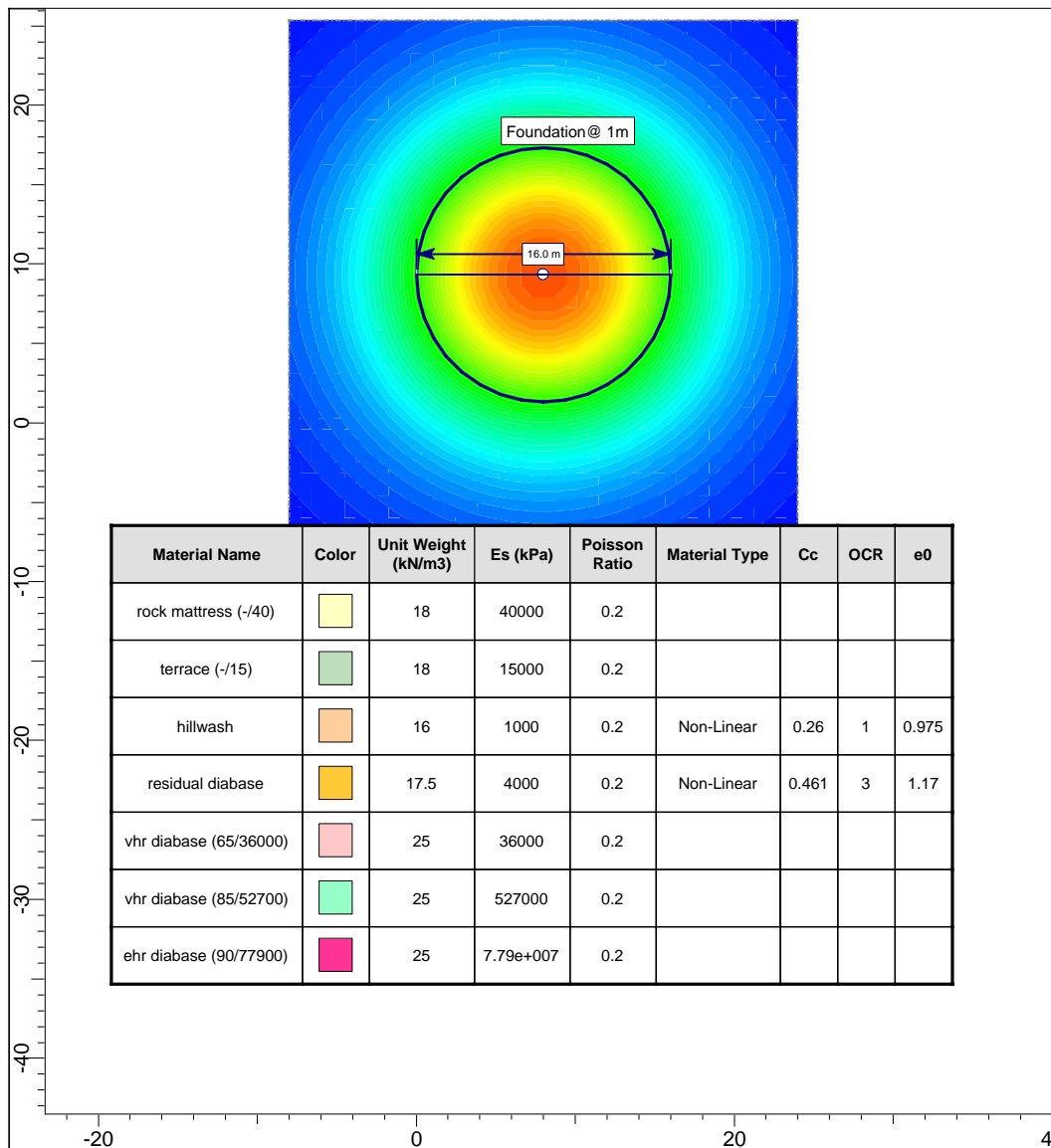


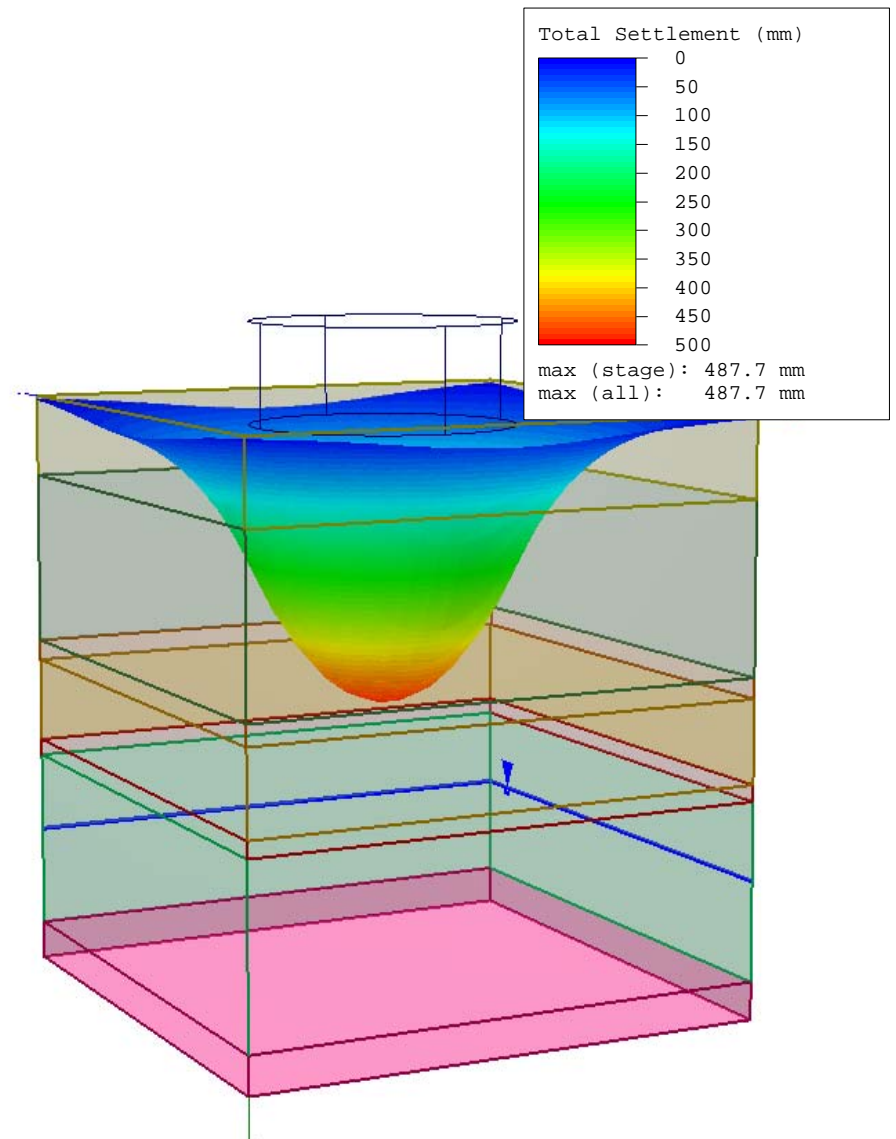
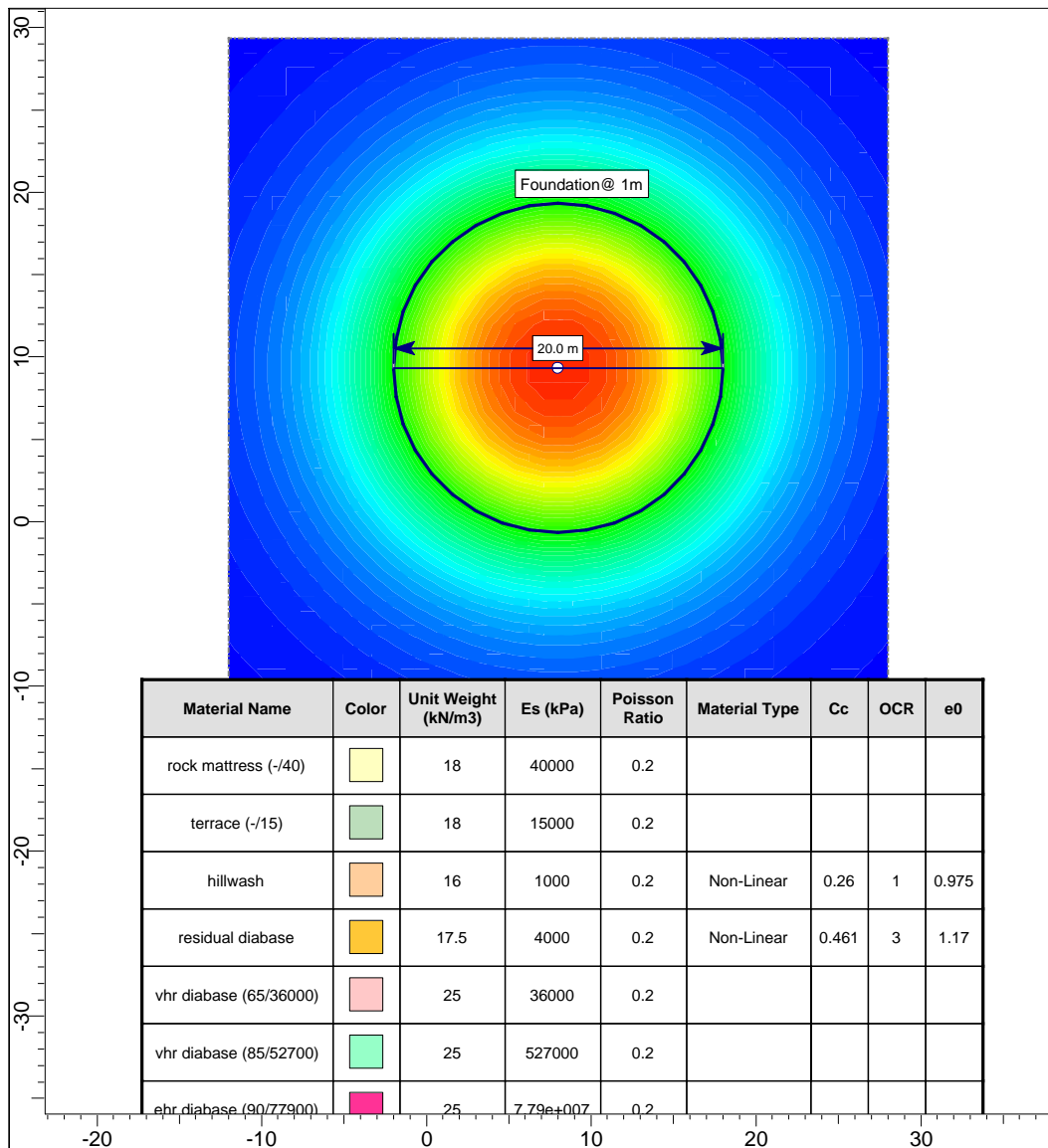


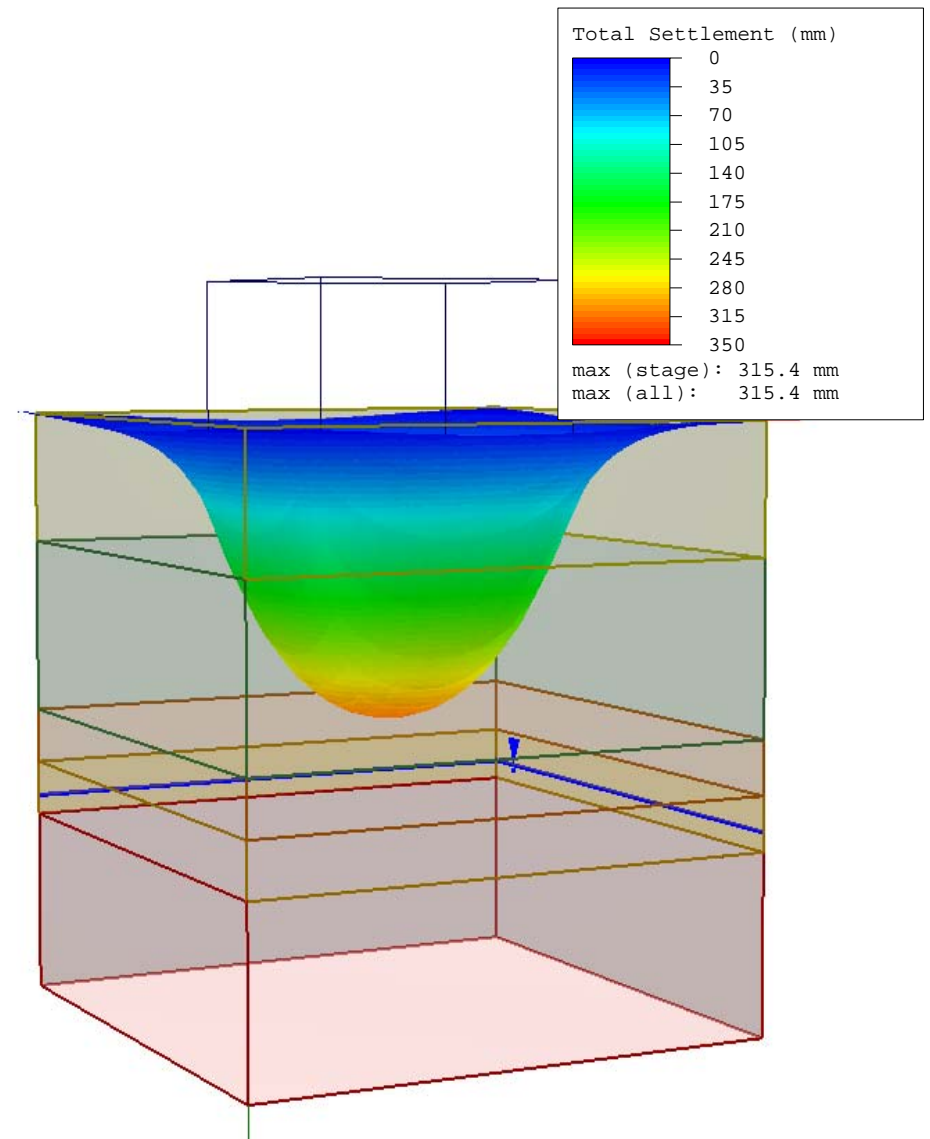
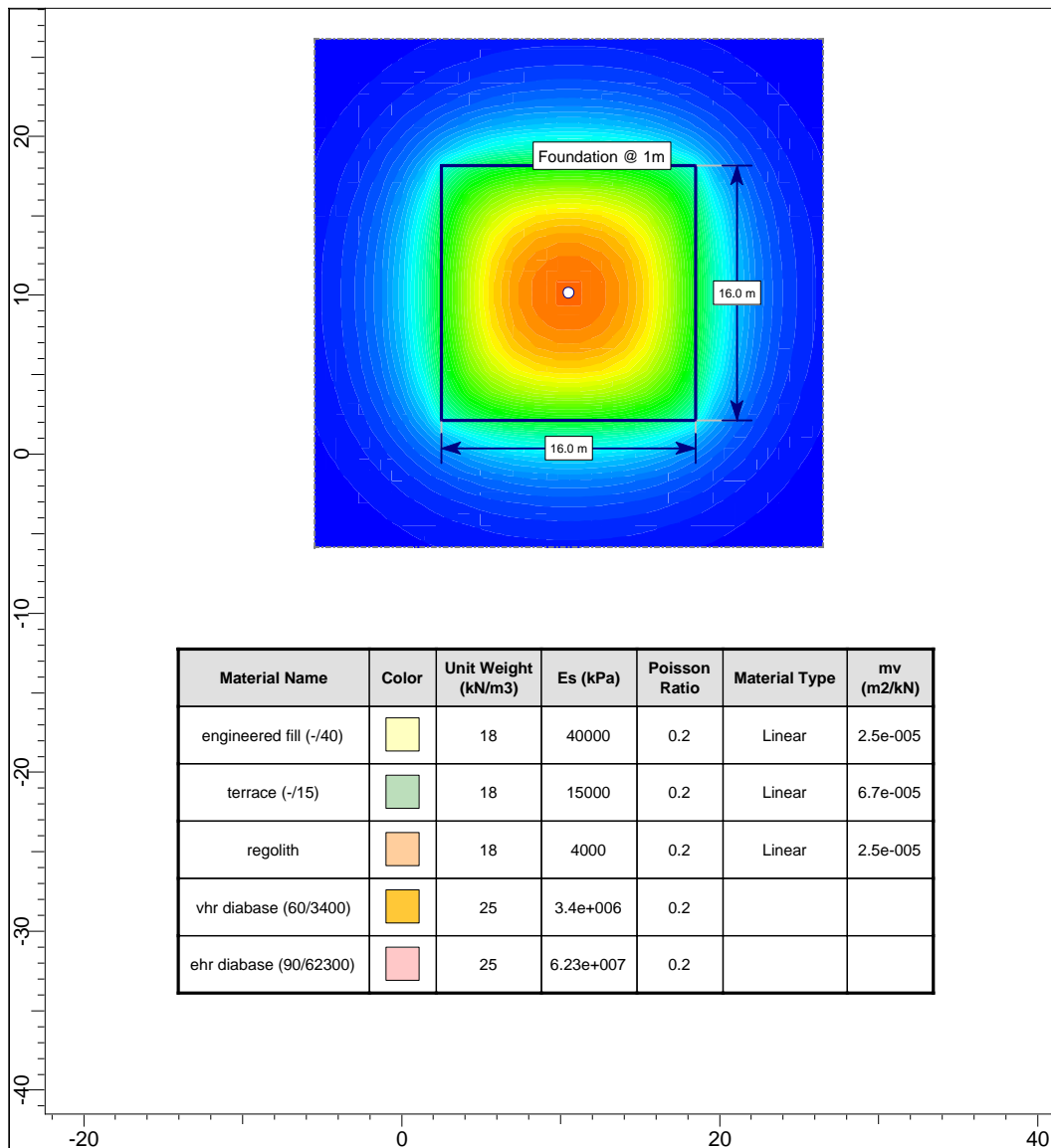


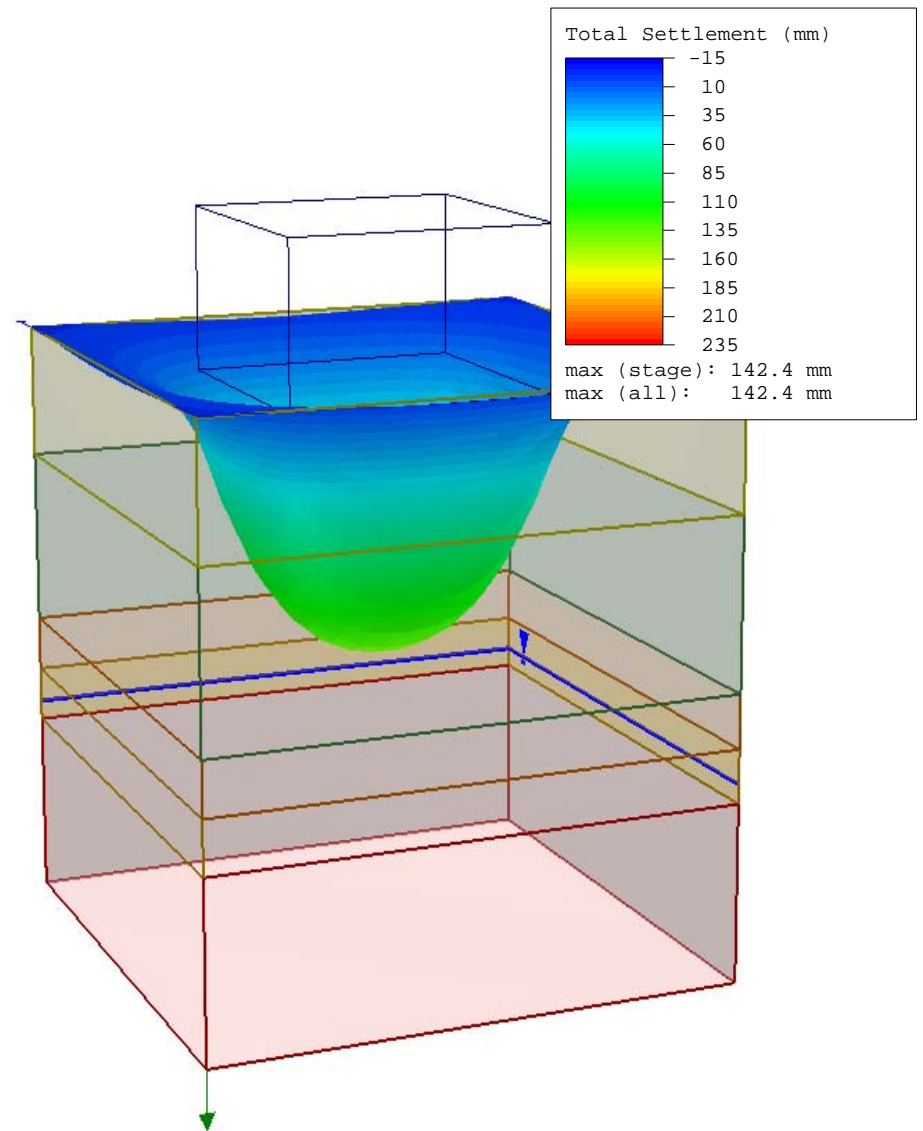
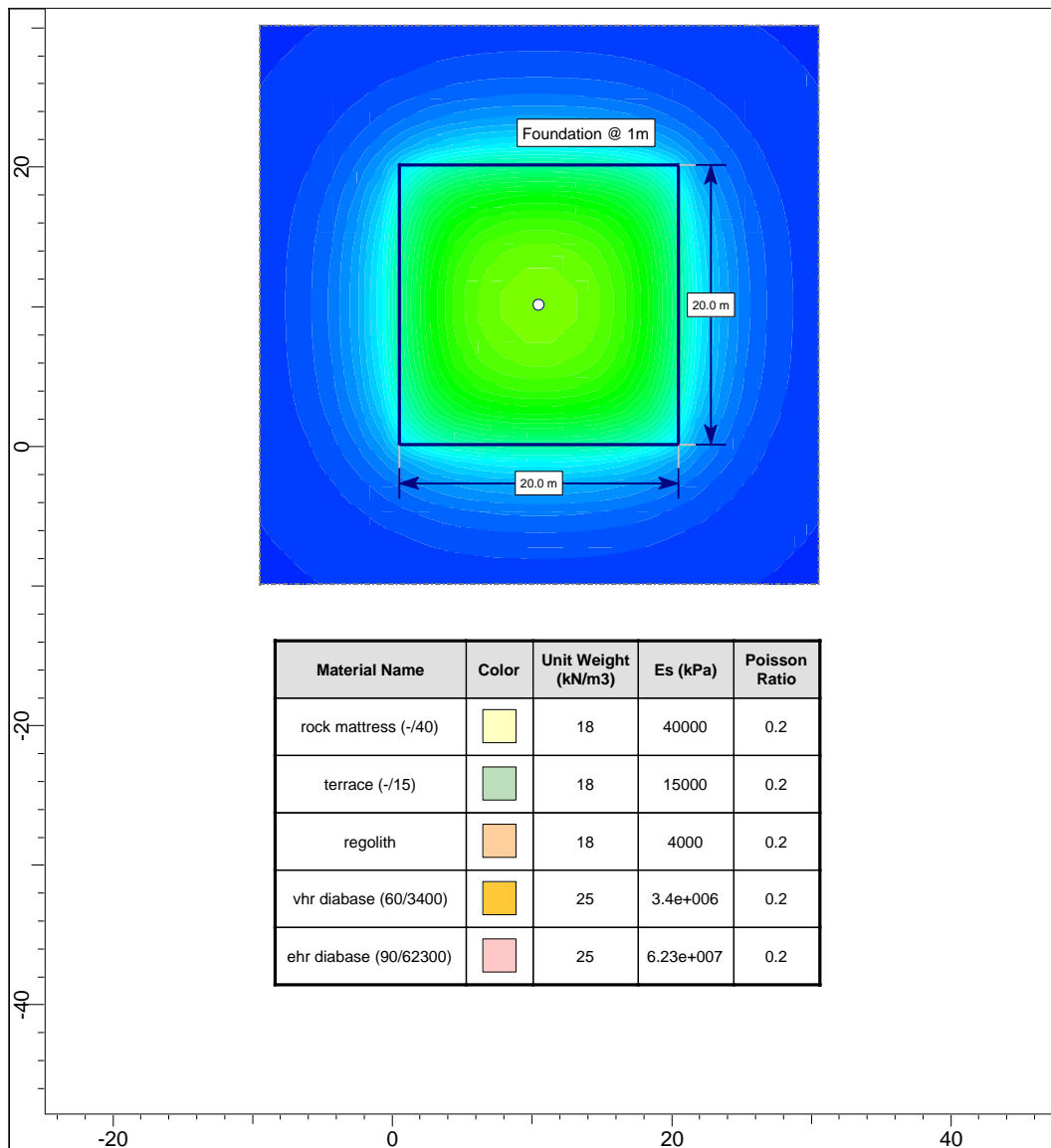


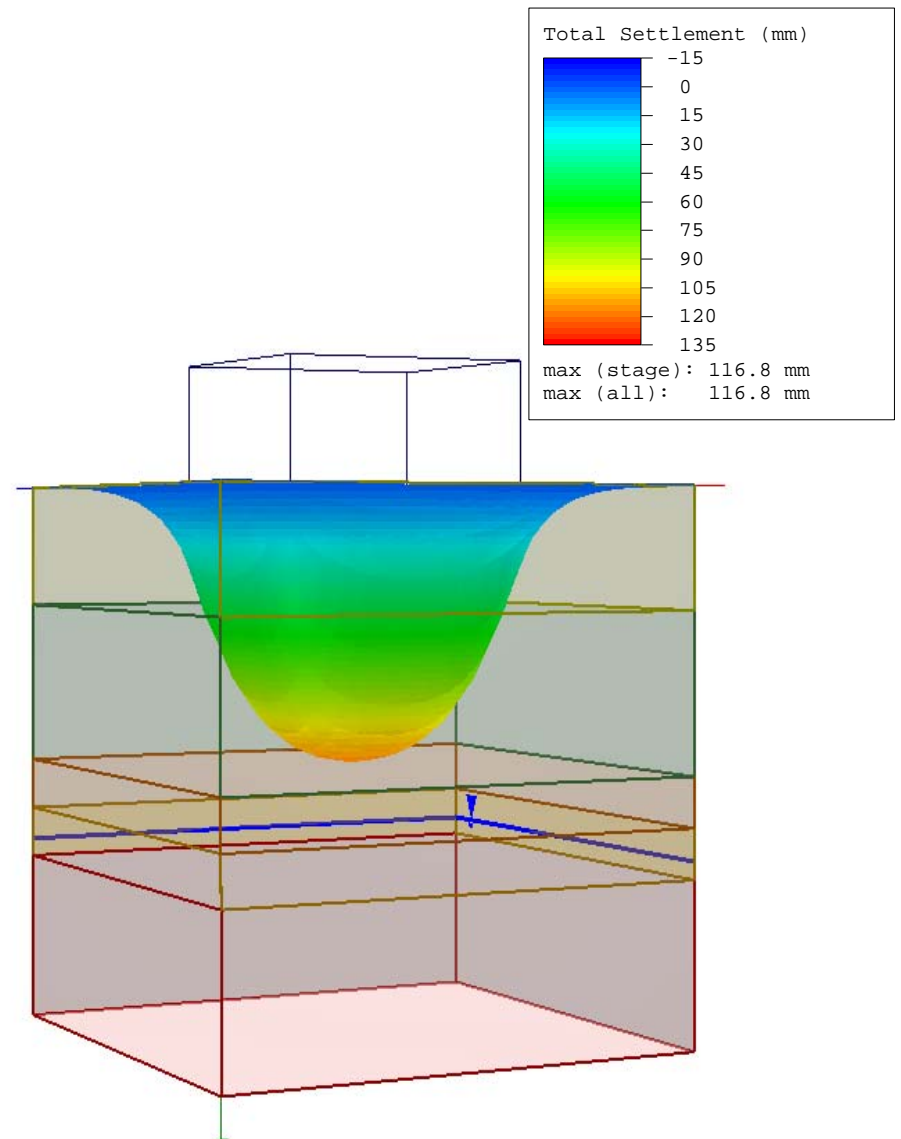
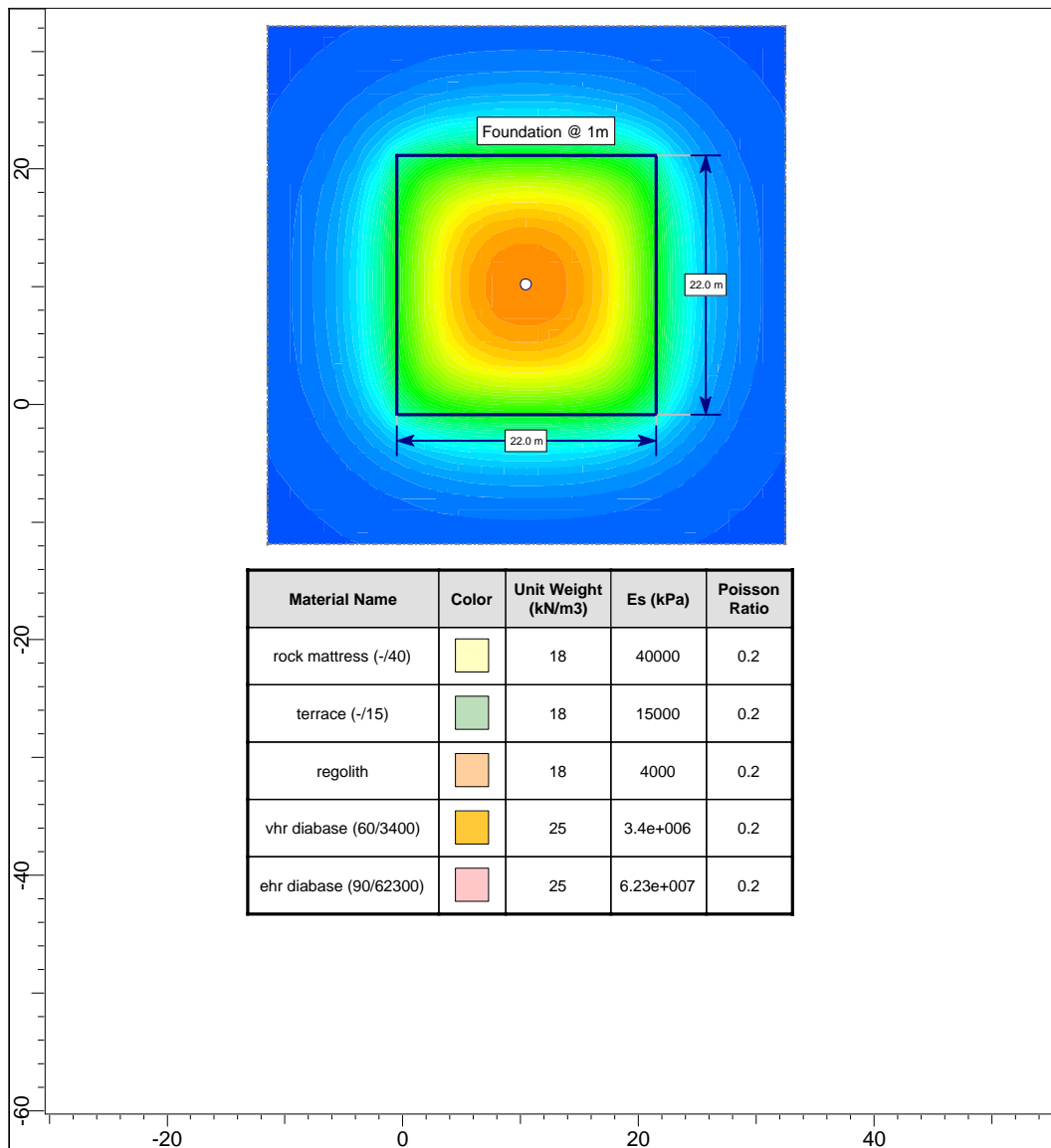












GEO3 CC
PO Box 6559
Nelspruit
1200
Tel: (013) 758 1226

Project

PROJECT BRAVO

Analysis Description

Predicted settlement for auxiliary cooling at BH42; effective pressure 160kPa at 1502.8mamsl

Drawn By

Henry Schurink

Client

Eskom

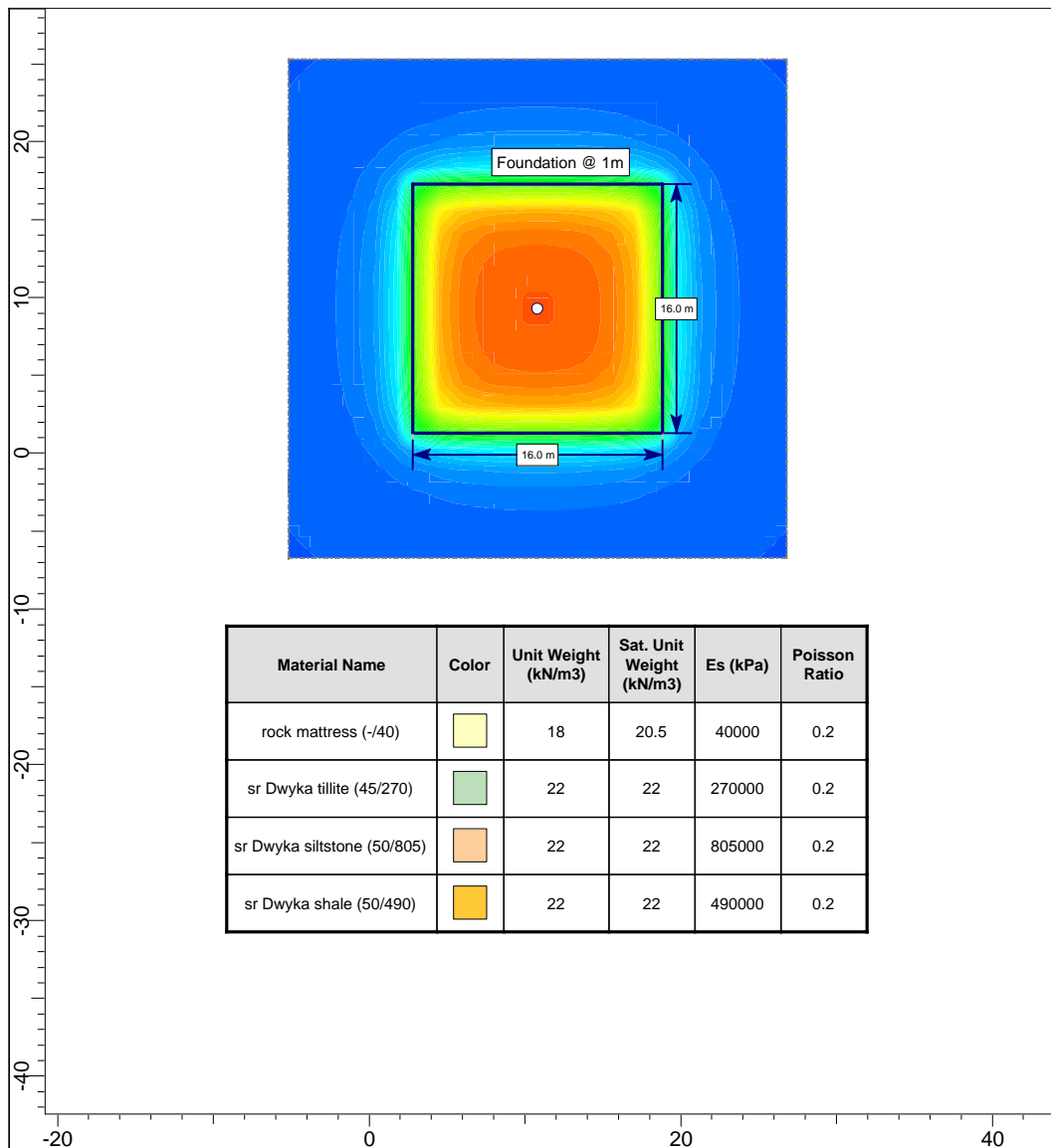
Date

11/03/2008, 01:01:09 PM

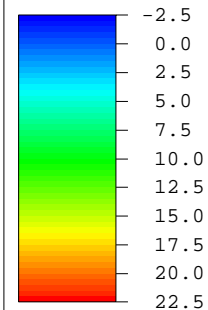
File Name

auxiliary cooling at BH42 c.s3z

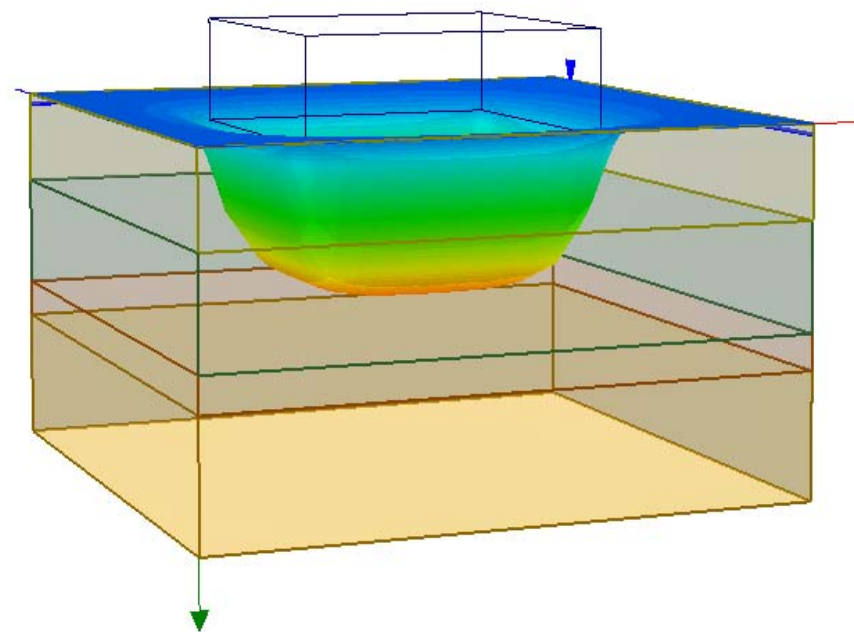
Figure 8.10c



Total Settlement (mm)



max (stage): 20.5 mm
max (all): 20.5 mm



GEO3 CC
PO Box 6559
Nelspruit
1200
Tel: (013) 758 1226

Project

PROJECT BRAVO

Analysis Description

Predicted settlement for auxiliary cooling plant at BH43; effective pressure 205kPa at 1502.8mamsl

Drawn By

Henry Schurink

Client

Eskom

Date

11/03/2008, 07:05:41 PM

File Name

auxiliary cooling at BH43.s3z

Figure 8.10d

